



YOUR LANES | OUR PASSION

# PINSETTER PARTS

## 2016-17

## A-2 Pinsetter Parts

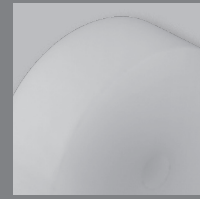
- Ball Return 3
- Deck 3
- Elevator 4
- Gearbox 7
- Pit Conveyor 8
- Pit Cushion 9
- Turret 10
- Miscellaneous 10

## GS Pinsetter Parts

- Electrical 12
- Miscellaneous 13

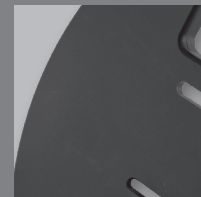
## MATERIALS

High quality parts start with high quality materials.



### UHMW

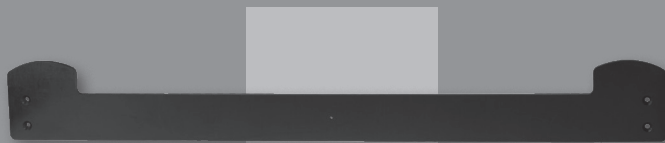
Very tough Ultra High Molecular Weight Polyethylene material that is highly resistant to abrasion and corrosive materials.



### HDPE

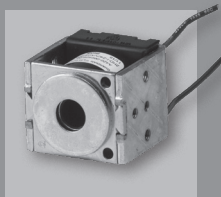
High Density Polyethylene is known for its high impact resistance and tolerance to corrosive chemicals and oils.

## NEW PRODUCTS



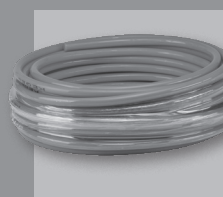
### SUPER DUTY RAKE BOARD

PAGE: 9



### HEAVY DUTY CYCLE SOLENOID 208/230V

PAGE: 10

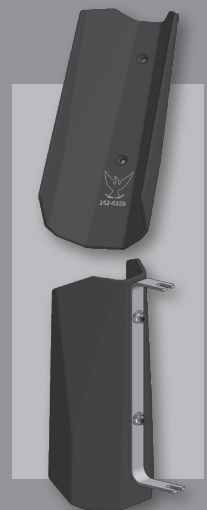


### GS ORANGE BELT

PAGE: 14

### TURRET POCKET

Are you tired of unwanted and excessive pin damage due to the current design of the turret basket assembly? Do you constantly replace broken or damaged turret wires? The Turret Pocket was designed around those two questions. Made from high density ABS plastic mounted on an adjustable bracket, the Turret Pocket is a revolutionary design. One pocket fits all 9 positions and is included with a bracket and hardware. Next time you break a turret wire, replace it with one of these. You will not be disappointed. Easy to mount, easy to adjust and less stressful on your pins.



Coming Fall 2016

# A-2 Pinsetter Parts

## **BALL ACCELERATOR WIPE 23"**

162-6127

Replaces Part 12-252377-000

## **BALL ACCELERATOR WIPE 36"**

162-6128

Replaces Part 12-252377-000

## **DROP SWEEP BALL WIPER KIT**

162-6129

Replaces Part 61-860246-000

## **DROP SWEEP CLOTH ONLY**

162-6130

These Pinsetter Wipes are made from a durable cotton weave that will keep the ball transfer areas free from oil and dirt for many years to come. Machine washable. Velcro® included where applicable.



## **DECK ROLLER**

162-6004

Replaces Part 90-200114-000

The Deck Roller is designed to create a consistently smooth pin pivot to minimize the amount of pins that fall down or are placed off-spot. You will also notice decreased "bounce" when the pins hit the deck roller. This solid one-piece design is made from high quality UHMW and requires no insert or bearings.



## **SAFETY DECK HOOK**

162-8008

Replaces Part 12-350803-600

Our Safety Deck Hook is simpler, safer, and performs better. Mounting holes are threaded to eliminate the need for locking nuts, and this assembly is easy to install and adjust. The knife edge has been removed, reducing wear on the hook and deck post pin while decreasing the risk of injury. The inner radius has been increased to allow more surface contact of the deck post pin for a better grip. This Safety Deck Hook is made from billet aluminum.

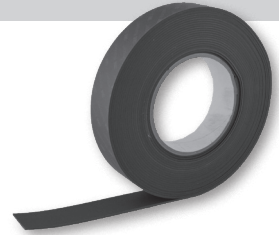


# A-2 Pinsetter Parts

## KEGEL KICKER MATERIAL - 25FT ROLL

162-7000

This Kegel Kicker Material comes in 25' rolls with 3M® self-adhesive backing. Easily install this to the ball wheel.

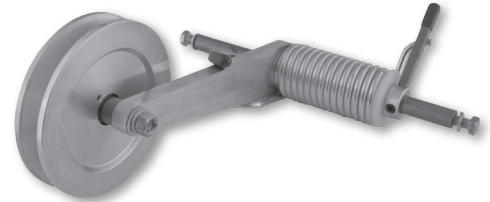


## THE DEVIATOR™ BALL WHEEL TENSIONER KIT

162-8400

The patented Deviator™ Ball Wheel Tensioner Kit will greatly reduce ball damage caused by pins being lodged between the ball and the lift rods.

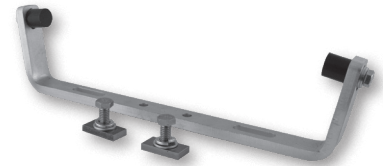
Eliminate premature belt wear by placing the ball wheel belt in a less stressful environment, which also gives you the ability to easily fine-tune the ball wheel belt tension.



## Y-SWITCH BAR

162-8101

Minimize the effects of a possible machine breakdown with our Y-Switch Bar. Even the best maintained machines will have difficulties from time to time. Don't let this happen in the middle of a game, league, or tournament. This Y-Switch Bar offers dual mounting positions to provide a back-up option when there are problems with your machine. The slotted bumpers on this switch bar allow for fine-tune adjustments. With its cold rolled steel construction, this part offers you versatility and longevity.



## BALL LIFT ROD STUD

162-6037

Replaces Part 12-400053-000

Precision-machined shaft made out of 1045 high strength steel.

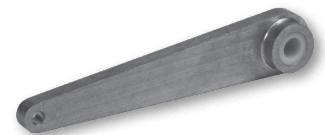


## IDLER ARM WITH BUSHING

162-8056

Eliminate oil impregnated bushings. This Idler Arm with Bushing is made from billet aluminum and includes a Nylon bushing.

162-6057 - Bushing



## REDUCTION KIT

162-8100

Increase frames per stop on your machine with our Reduction Kit. Having fewer stops on your machine requires less work for pin chasers and mechanics, and also leads to more satisfied customers who are not spending their time waiting for repairs. This kit accomplishes that by slowing the pinsetter run speed and allowing the pin wheel to load more efficiently. This kit comes as a set of three reduction pulleys and the related hardware.



# A-2 Pinsetter Parts



## A-2 GUIDE ROLLERS

With traditional guide rollers, the urethane will degrade, screws will back out, flanges will snap, and it's only a matter of time before you're spending money to replace them. We are confident in saying that these parts will outlast the original version.

What's our secret?

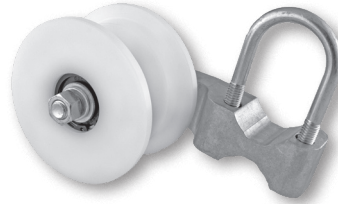
- High quality UHMW construction.
- Proven reliability of PEER® rubber seal bearings.
- Thicker flanges for better tracking.



162-8003



162-8074



162-8073



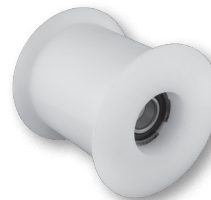
162-8002



162-8001



162-8011



162-8052

PART #	PART NAME	BEARING	SNAP RING	REPLACES PART #
162-8003	UPPER BALL WHEEL GUIDE ROLLER	162-9608	162-2401	12-400272-000
162-8074	SOLID UPPER BALL WHEEL GUIDE ROLLER *May order 162-8075 (Mounting Bracket) if converting from original OEM configuration	162-9606	162-2403	12-862823-000
162-8073	SPLIT UPPER BALL WHEEL GUIDE ROLLER W/BRACKET	162-9606	162-2403	N/A
162-8075	UBWGR UNIVERSAL MOUNTING BRACKET (Hardware Included)	N/A	N/A	N/A
162-6075	UBWGR UNIVERSAL MOUNTING BRACKET (Bracket Only)	N/A	N/A	N/A
162-8002	LOWER BALL WHEEL GUIDE ROLLER - SOLID	162-9601	162-2404	12-400240-000
162-8001	LOWER BALL WHEEL GUIDE ROLLER - SPLIT	162-9601	162-2404	12-400268-000
162-8011	UPPER PIN WHEEL GUIDE ROLLER	162-9602	162-2401	12-400266-000
162-8052	LOWER PIN WHEEL GUIDE ROLLER	162-9601	162-2404	12-400263-000

# A-2 Pinsetter Parts



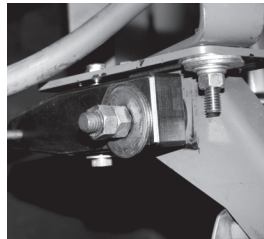
## PREFERENCE SYSTEM KIT

162-8078

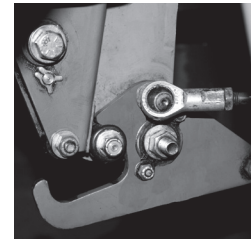
The Kegel Preference System Kit is designed to alleviate the headaches associated with the Brunswick® A-2 and Jet Back pinsetters. Minimize the problems caused by the factory design in a reasonably priced, easy to install, low maintenance kit.



This kit eliminates 12 individual parts of the OEM assembly that when not kept regularly maintained and adjusted will eventually fail.



Our UHMW preference actuator is a low maintenance, low wear portion of the kit. The simple design eliminates the OEM spring rod bumper.



A powerful magnet is used to create a positive locking and unlocking of the preference system kit.

## SPRING ROD

162-8023

Replaces Part 12-400193-000



Achieve more refined adjustments with our Spring Rod. The length and thread of the shaft have been extended to allow for more specific precision. This assembly features a separate shaft and head so each part is replaceable. Don't waste money replacing the whole item if only one piece becomes damaged. Our Spring Rod is built out of tough cold rolled steel.

162-6023 - Shaft

162-6123 - Head

## SPRING ROD BUSHING

162-6025

Replaces Part 12-400803-000



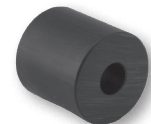
This Spring Rod Bushing is made from tough cold rolled steel.

## SPRING ROD BUMPER

162-6050

Replaces Part 90-400123-000

Replaces Part 12-400123-000



Our Spring Rod Bumper will not break down easily like other bumpers. It has a one-piece Nylon construction that has high durability.

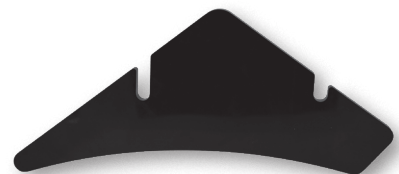
## PIN DEFLECTOR PLATE

162-6133

Replaces Part 90-400840-600

Have your old metal deflector plates been welded time and time again? Are you unhappy with the urethane material options that break and degrade?

Try our new Pin Deflector Plate made out of solid HDPE, a durable material that will require far less maintenance. Virtually indestructible.



# A-2 Pinsetter Parts

## PIN WHEEL CLUTCH IDLER PULLEY

162-8300

Having turn pan jams on your machine? Pin wheel brakes wearing through and damaging your belts? Solve this problem by eliminating the pin wheel brake with our Pin Wheel Clutch Idler Pulley.

This solid machined pulley with clutch bearing replaces the OEM Pin Wheel Brake or OEM Idler Pulley. Eliminate excessive pin wheel coasting which can cause an inconvenience and waste valuable time. When converting from the OEM Pin Wheel Brake, you will also need to order 162-8056 (Idler Arm).

162-9607 - Bearing



## JACK SHAFT

162-6079

Replaces Part 12-400810-000

Tired of jack shafts prematurely failing due to inferior designs, low quality steel, and inadequate press fits? Try the new Kegel Jack Shaft constructed out of 1045 high strength cold rolled steel and machined to exact specifications. This universal jack shaft ensures the proper bearing press needed for optimum performance. Black oxide finish.

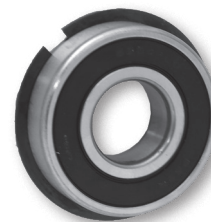


## JACK SHAFT BEARING

162-9609

Replaces Part 10-430001-000

When maintaining or replacing your existing jack shaft assembly, it is important to inspect your bearings, regrease, and/or replace as needed. Our Jack Shaft Bearings, made by PEER®, are the perfect complement to the Kegel Jack Shaft.

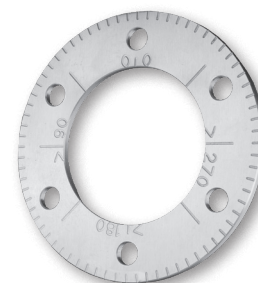


## DEGREE WHEEL

162-6034

Replaces Part 12-100044-000

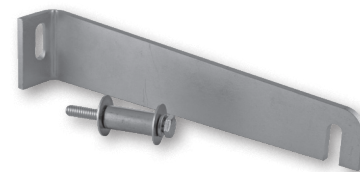
Our Degree Wheel is designed to allow you to easily locate, mark, and adjust the rake cam to fit your pinsetter. It is not only useful for making quick visual adjustments, but also looks great on your machine with its highly polished finish. This Degree Wheel is made out of high quality billet aluminum.



## DETECTOR SUPPORT BRACKET

162-8068

The Detector Support Bracket reinforces the detector mount and stabilizes the assembly. This bracket also gives you the ability to level vertically.



# A-2 Pinsetter Parts

## PIT MOUNTS

162-2034

Replaces Part 90-675000-000



Stay out of the pit! Are you tired of going back into the same pit conveyor assemblies and constantly replacing the conventional rubber pit mounts due to melting or structural failure? Our Neoprene Pit Mounts go through an astringent curing process, and incorporate a grade 8 stud, making them more durable and ensuring they will not prematurely separate. A little more expensive, but well worth the extra cost!



## CARPET COVER - SLIPPERY

162-6188

Replaces Part 12-860725-000



If your carpet covers are slowing down your pins, try this Carpet Cover. It uses a flat woven polyester that has a slick surface and gets the pins to quickly slide off the shaker board. It is more durable, lighter, and washes better than the original version.

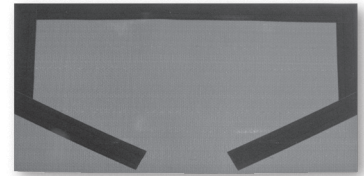


## PVC PIT CARPET

162-6117

Replaces Part 12-300103-000

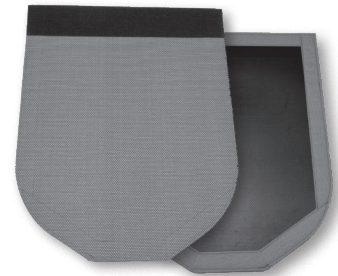
Prevent wear and tear with this PVC Pit Carpet made to withstand the toughest conditions. This Pit Carpet mounts easily over your worn carpet with ultra gripping Velcro® and is just as easy to remove for quick cleaning. This might be the last carpet you will ever need.



## PVC CARPET SAVER

162-6120

This PVC Carpet Saver covers the high impact area of your pit carpet, leaving the edges of your carpet available to hold carpet covers. It installs in seconds with ultra gripping Velcro®. Add years of life to your existing pit carpets at a fraction of the cost.



## ZIP CARPET

162-6132

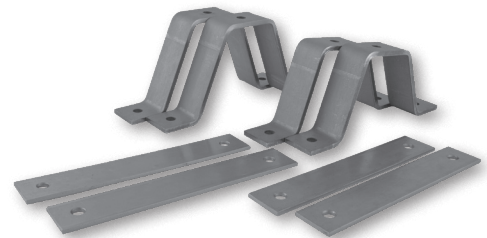
Replaces Part 12-300103-000

Looking for a great alternative to the OEM pit carpets for a reasonable price? This Zip Carpet can be used to replace your old worn pit carpets or simply Velcro® it right on top of an existing one.

## PIT TIERS KIT - 2 FRONT 2 REAR

162-8103

The Pit Tiers Kit is made of cold rolled steel. We have returned to the classic metal design that is stronger and will last longer. This kit is sold in sets of 4 (2 Front and 2 Rear). Pit mounts not included.





# A-2 Pinsetter Parts

## JOGGER ARM

162-8024

Replaces Part 12-300163-000



Frustrated by alignment issues? Our Jogger Arm is the answer to this problem. The UHMW insert eliminates the need for the needle bearing and spacer. The needle bearings tend to wear over time due to the fact that they don't make a full revolution. The hole in our design is always centered which cannot be done on a cast arm. This, combined with our precision machining, helps you achieve perfect alignment. This assembly is built from tough billet aluminum and also includes a PEER® rubber seal bearing.

162-9605 - Bearing

162-2404 - Snap Ring

## JOGGER ARM BUSHING KIT

162-6051

Needle bearings tend to wear prematurely because they don't make a full revolution. Our Jogger Arm Bushing Kit replaces the needle bearing and spacer. It is made from durable UHMW and is sold as a set of two.



## FOLLOWER LINK

162-6016

Replaces Part 12-252346-000

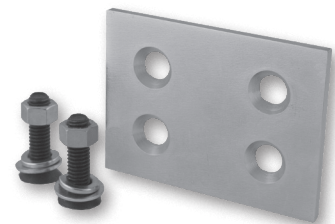


Looking for a part that will fit your machine perfectly? Our Follower Link creates the expert fit every time due to its precision machining. Avoid broken links caused by brittle castings with the durable billet aluminum construction.

## PIT CUSHION REPAIR KIT

162-6045

Use our Pit Cushion Repair Kit to replace worn out mounting holes. This kit allows you to mount directly on the kickback.



## SUPER DUTY RAKE BOARD

162-6164



For a rake that will not break try our new high-density polyethylene rake boards. These rake boards are flexible yet durable enough to take the most extreme impacts that sometimes unfortunately occur. At 5/8 of an inch thick this may be the last rake board you ever by. Hardware included and sticker friendly.

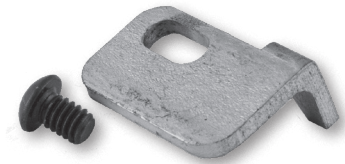
# A-2 Pinsetter Parts

TURRET

## FAIL TO INDEX LATCH

162-6100

The Fail To Index Latch removes excessive play in the indexing assembly. The installation for this is quick and it is very handy in a pinch.



## ADJUSTABLE TURRET SPOON

162-6009

Replaces Part 12-150283-000

The Adjustable Turret Spoon is designed to allow for perfect pin positioning in relation to the turret wires. This features a slotted adjustable design which allows the pin to drop precisely into the center of the deck bucket. Adjustments can be made front to back and left to right. This part is made from tough cold rolled steel and is designed to be used in the 1, 7, and 10 positions only.



MISCELLANEOUS

## PIN GATE STRAP

162-6007

Replaces Part 12-860808-000

Reduce pin gate failure while increasing the lifespan of this part compared to the original version. This Pin Gate Strap helps minimize machine stops and waiting time of frustrated bowlers. Our Pin Gate Strap, machined from cold rolled steel, is made thicker to increase strength and durability. It also features a deeper recessed notch which allows for better seating to help reduce pin gate failure.

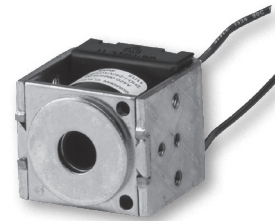


## HEAVY DUTY CYCLE SOLENOID 208/230V

162-1201

Replaces Part 10-688006-000

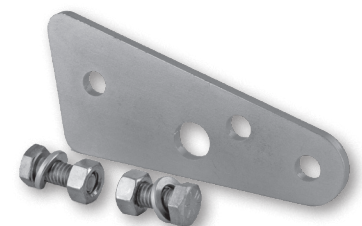
Made by Guardian™ Electric Manufacturing Company.



## RABBIT EAR REPAIR PLATE

162-6046

Replace worn out mounting holes with this new mounting bracket.



# A-2 Pinsetter Parts

## PULLEYS

Greatly reduce premature belt wear and poor tracking with our Pulleys. Increase the lifespan of your machine and save money on maintenance. Our one-piece design allows for precise belt tracking and fit. All assemblies include PEER® rubber seal bearings for accessibility and maintenance.



### PULLEY IDLER FOR PIT CONVEYOR

162-6020

Replaces Part 12-300071-000



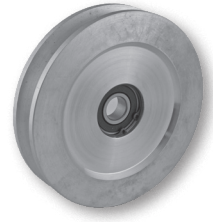
### PULLEY IDLER FOR FLAT BELT

162-8015

Replaces Part 12-400297-000

162-9603 - Bearing

162-2402 - Snap Ring



### PULLEY IDLER FOR V-BELT

162-8021

162-9603 - Bearing

162-2402 - Snap Ring

## BEARINGS & SNAP RINGS

We offer a line of high quality PEER® bearings. Due to their commitment to reliability and performance, PEER® has earned the following awards, among others:

Chrysler® Outstanding Quality Performance 2011

ZFLS™ Supplier of the Year 2008-2010

John Deere™ CROP Award 2006



BEARING	SNAP RING	FITS ASSEMBLY NUMBER
162-9601	162-2404	162-8001, 162-8002, 162-8052
162-9602	162-2401	162-8011
162-9603	162-2402	162-8015, 162-8021
162-9605	162-2404	162-8024
162-9606	162-2403	162-8073, 162-8074
162-9607	N/A	162-8300
162-9608	162-2401	162-8003

# GS Pinsetter Parts

ELECTRICAL

## PIN COUNT SWITCH For GS-98 and GS-X

163-1202

Replaces Part 47-014918-003

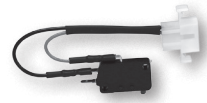


Ensure perfect actuation time and time again with our Pin Count Switch. This design features a metal spring in place of the pin count switch arm, giving it the ability to actuate in any direction in 360 degrees. Easily handle pins that come off in any direction without unnecessary stress to the switch or damage to the actuator shaft.



## MICROSWITCHES

We use reliable Omron® switches. Try this direct OEM replacement at an affordable price.



### Single Omron®: 163-8001

Replaces Single Cherry®  
(Part 47-053635-004)

### Double Omron®: 163-8002

Replaces Double Cherry®  
(Part 47-054700-004)

### Single: 163-8003

Replaces Singles GS-X  
(Part 47-055323-004)

## SETTING TABLE HARNESS (GS-X Only)

163-8000

Replaces Part 47-245164-001

When you look at the current Setting Table Cable, you see a variety of colored wires. Have you ever wondered why its counterpart, the Setting Table Harness, only has four standard colors? Eliminate the confusion and don't waste time trying to match up wires with our new Setting Table Harness. This harness is hand-pinned by our wiring experts at Kegel. Simplify the troubleshooting process using our color-coded wiring system designed to match your existing setting table cable assembly.



### SETTING TABLE CABLE ASSEMBLY CONSOLIDATED

163-8004

Replaces Part 47-244922-004

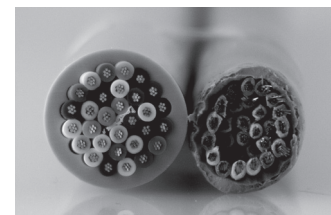


### SETTING TABLE CABLE ASSEMBLY NEXGEN

163-8005

Replaces Part 47-245420-004

Our Setting Table Assemblies have cables that are 20% bigger than the current version with additional reinforcement from the flex tubing. Each wire strand is thicker, making them more durable and less prone to breaking. Our 30 conductor design incorporates three spare wires which can be easily used as replacements if you do encounter a broken or damaged wire.



Registered Trademarks are property of their respective owners.

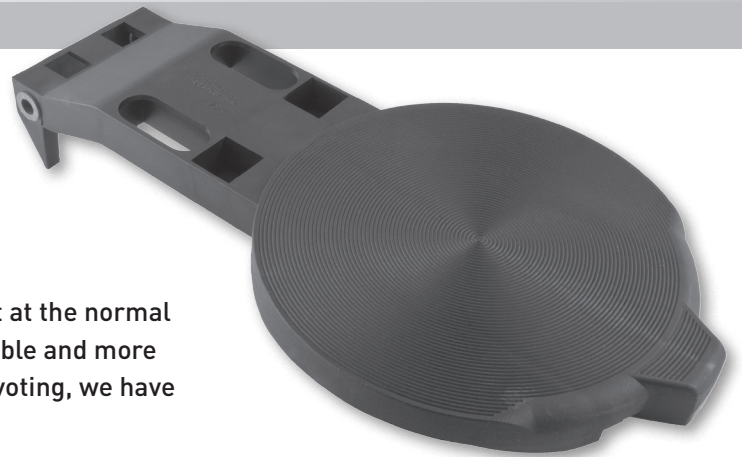
# GS Pinsetter Parts

## PIN DETECTOR PLATE (GS-X Only)

163-6001

Replaces Part 47-054298-001

Our Pin Detector Plate is made to be highly resistant at the normal wear points. The solid overall design creates a durable and more sound structure. To prevent excessive wear from pivoting, we have inserted bushings into our design.



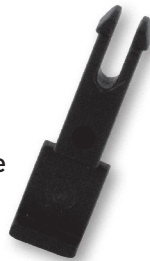
Our ears feature a more durable dual support system.

## RETAINING PIN

163-6002

Replaces Part 47-094789-003

Our Retaining Pin is notched deeper for more surface contact in relation to the square spindle. Made from high quality Nylon 6.



## PIVOT PIN (PKG OF 10)

163-6004

Replaces Part 47-860005-000

Rugged Nylon 6 construction.

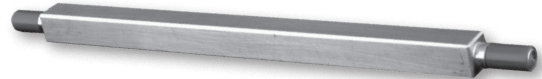


## SQUARE SPINDLE WITH BUSHING

163-6003

Replaces Part 47-094790-009

What's worse than having a part on your machine that breaks all of the time? Having that part located throughout the whole machine! The current version of the Square Spindle with Bushing is made out of plastic. They are tough to replace when they break and there are many spots on a machine where they could breakdown. Don't let the small parts of your machine cause big headaches. Our Square Spindle with Bushing is made out of solid aluminum to maximize the durability. Put them in your machine and allow yourself to focus on more important things.



## SWEEP WAGON WHEEL

162-6099

Replaces Part 99-040249-004

Our Sweep Wagon Wheel is designed to prevent delamination (or separation). By installing parts that are more durable than the current market versions, you will end up saving money not buying as many replacements. The high grade UHMW construction of our Sweep Wagon Wheel will outlast the competitors' part and with less maintenance or repairs.



# GS Pinsetter Parts

MISCELLANEOUS



## GS RED BELT 12.5 mm x 20 METERS

163-9020R

Replaces Part 47-275804-009

## GS RED BELT 15 mm x 7 METERS

163-9007R

Replaces Part 47-024838-005

Achieve superior pin transport with this polyurethane belt. This smooth material was selected specifically for its ability to grip against the pin surface. Direct OEM replacement at an affordable price. Use your current welding tools.

## GS ORANGE BELT 12.7 mm x 20 METERS

163-9004

Replaces Part 47-275804-009

This new belt provides an economical option to our Red belt. Easy to weld and slightly textured for positive pin transfer. A direct OEM replacement at an affordable price.”

## HEAVY DUTY OVERFLOW SOCK

163-6006

Replaces Part 47-022531-000

This pin sock has a 6 inch wide PVC strip that bends at nearly 90 degrees and delivers the pins so they land gently and parallel to the transport band. Say good-bye to transport bands wearing out every two or three years due to repetitive pin impact. The extra wide mouth also helps prevent pin jams.

## IMPACT STRIP

162-6125

Replaces Part 47-021010-003

Minimize the possibility of ball damage and pin damage due to worn out impact strips. For each of our products, we have done thorough testing and research. Using our knowledge and expertise, we are able to determine the best material for each specific application. In this location, HDPE is the most impact resistant material we could choose. Unlike the original plastic injection molded parts, our Impact Strip is machined from a solid piece of HDPE.

## GUTTER ADAPTER

162-6124

Replaces Part 47-041721-002

Our Gutter Adapter helps eliminate dead wood. Don't waste time collecting pins and minimize customer complaints by installing this part. Our Gutter Adapter is machined from a solid piece of HDPE.

## PIVOT BEARING

162-6126

Replaces Part 47-075352-004

Pivot Bearings are a vital part of your pinsetter and when they fail, it can result in a lot of damage to your machine. Our Pivot Bearing is made from 1018 cold rolled steel, the perfect material to withstand the immense weight and pressure placed on this part of your pinsetter.



# GS Pinsetter Parts

## **PIN WIPE**

163-6022

Replaces Part 47-860003-000

Replaces Part 47-092527-000

## **UNDERGROUND BALL WIPE**

163-6023

## **TRAP DOOR BALL WIPE**

163-6024

## **ACCELERATOR BALL WIPE**

163-6025



These GS Pinsetter Wipes are made from a durable cotton weave that will keep the ball and pin transfer areas free from oil and dirt for many years to come. Machine washable. Velcro® included where applicable.

## **T-BAND WHITE**

163-6005

Replaces Part 11-635201-000

Our white T-Band is a heavyweight at 3.75 mm thick, but it retains its flexibility making it easy to install. It has great tracking and stays in place once adjusted. This T-Band consists of a fabric top, rubber middle, and cloth bottom. With a 1-1/8" lap seam, you will experience no delamination. Works out of the box.



## **T-BAND BLACK**

163-6026

Replaces Part 11-635201-100

Looking for great quality at an affordable price? Try our black T-Band, a direct OEM replacement.



## **SHARK TRANSITION CAM**

163-6008

Every pinsetter technician knows that a critical location in any machine is where the pin must change the direction it is traveling. In the GS series pinsetters, the pins exit the Shark assembly at a very sharp angle which can cause the pin to slip and then have to reorient as it travels down the distributor belts.

Our Shark Transition Cam provides a gentler angle for the pin to transfer between the Shark and distributor belts. The head of the pin strikes the Shark Transition Cam instead of the side rail of the distributor, allowing it to absorb most of the rebound. Sold in a set of two cams. Use one set per pinsetter.



## **CROSSOVER WEDGE**

163-8011

Another problem area within the GS series machines is the crossover area where the pin must reverse the direction of travel. Due to the gap between the pin and the side plates in the crossover area, the pin is likely to have an inconsistent transfer when changing directions. We have solved this problem with this Crossover Wedge. Much like our Shark Transition Cam, the Crossover Wedge facilitates a smooth transfer around the bend. Sold in a set of two wedges. Use one set per pinsetter.





[www.kegel.net](http://www.kegel.net)

Toll Free (US Only): 800 - 280 - BOWL (2695)

Fax: 863 - 734 - 0204

International: 863 - 734 - 0200

1951 Longleaf Boulevard  
Lake Wales, FL 33859 USA