



PINSETTER PARTS

2014-15



YOUR LANES | OUR PASSION

A-2 Pinsetter Parts

- Ball Return 3
- Deck 3
- Elevator 4
- Gearbox 7
- Miscellaneous 8
- Pit Conveyor 9
- Pit Cushion 11
- Turret 11

GS Pinsetter Parts

- Miscellaneous 12
- Electrical 14

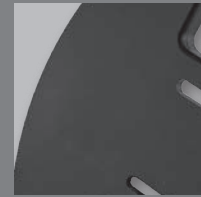
MATERIALS

High quality parts start with high quality materials.



UHMW

Very tough Ultra High Molecular Weight Polyethylene material that is highly resistant to abrasion and corrosive materials.



HDPE

High Density Polyethylene is known for its high impact resistance and tolerance to corrosive chemicals and oils.

NEW PRODUCTS



A-2 PINSETTER WIPES

PAGE: 3



BALL LIFT ROD STUD

PAGE: 4



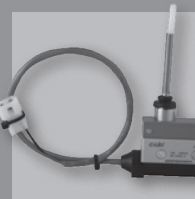
SETTING TABLE CABLES

PAGE: 15



GS PINSETTER WIPES

PAGE: 14



PIN COUNT SWITCH

PAGE: 14

A-2 Pinsetter Parts

BALL ACCELERATOR WIPE 23"

162-6127

Replaces Part 12-252377-000

BALL ACCELERATOR WIPE 36"

162-6128

Replaces Part 12-252377-000

DROP SWEEP BALL WIPER KIT

162-6129

Replaces Part 61-860246-000

DROP SWEEP CLOTH ONLY

162-6130

These Pinsetter Wipes are made from a durable cotton weave that will keep the ball transfer areas free from oil and dirt for many years to come. Machine washable. Velcro® included where applicable.



SAFETY DECK HOOK

162-8008

Replaces Part 12-350803-600

Our Safety Deck Hook is simpler, safer, and performs better. Mounting holes are threaded, to eliminate the need for locking nuts, and this assembly is easy to install and adjust. The knife edge has been removed, reducing wear on the hook and deck post pin while decreasing the risk of injury. The inner radius has been increased to allow more surface contact of the deck post pin for a better grip. This Safety Deck Hook is made from billet aluminum.



DECK ROLLER

162-6004

Replaces Part 90-200114-000

The Deck Roller is designed to create a consistently smooth pin pivot to minimize the amount of pins that fall down or are placed off-spot. You will also notice decreased "bounce" when the pins hit the deck roller. This solid one-piece design is made from highly resistant UHMW and requires no insert or bearings.



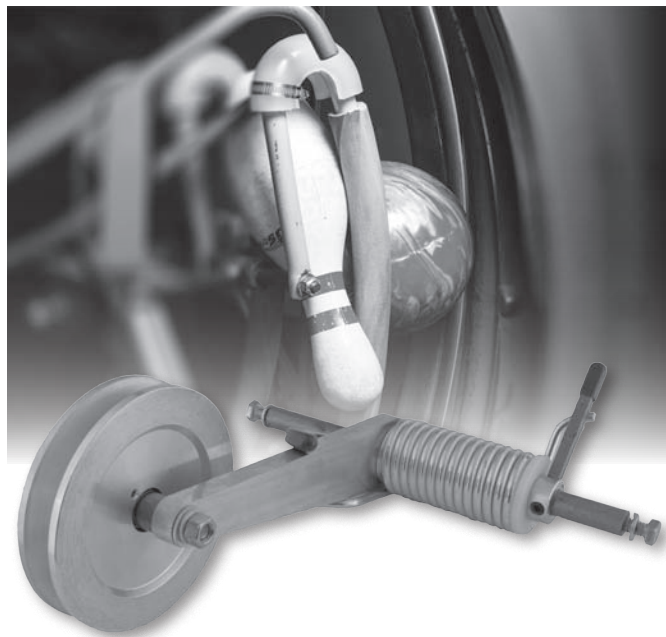
A-2 Pinsetter Parts

THE DEVIATOR™ BALL WHEEL TENSIONER KIT

162-8400

The patent-pending Deviator™ Ball Wheel Tensioner Kit will greatly reduce ball damage caused by pins being lodged in between the ball and the lift rods.

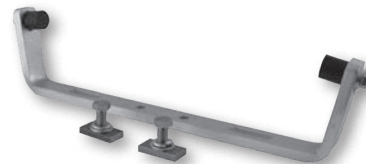
Eliminate premature belt wear by placing the ball wheel belt in a less stressful environment which also gives you the ability to easily fine-tune the ball wheel belt tension.



Y-SWITCH BAR

162-8101

Minimize the effects of a possible machine breakdown with our Y-Switch Bar. Even the best maintained machines will have difficulties from time to time. Don't let this happen in the middle of a game, league, or tournament. This Y-Switch Bar offers dual mounting positions to provide a back-up option when there are problems with your machine. The slotted bumpers on this switch bar allow for fine-tune adjustments. With its cold rolled steel construction, this part offers you versatility and longevity.



KEGEL KICKER MATERIAL - 25FT ROLL

162-7000

This Kegel Kicker Material comes in 25' rolls with 3M® self-adhesive backing. Easily install this to the ball wheel.



BALL LIFT ROD STUD

162-6037

Replaces Part 12-400053-000

Precision machine shaft made out of 1045 high strength steel.



IDLER ARM WITH BUSHING

162-8056

Eliminate oil impregnated bushings. This Idler Arm with Bushing is made from billet aluminum and includes a Nylon bushing.

162-6057 - Bushing



A-2 Pinsetter Parts

A-2 GUIDE ROLLERS

With traditional guide rollers, the urethane will degrade, screws will back out, flanges will snap, and it's only a matter of time before you're spending money to replace them. We are confident in saying that these parts will outlast the original version.

What's our secret?

- High quality UHMW construction.
- Proven reliability of PEER® rubber seal bearings.
- Thicker flanges for better tracking.



162-8003



162-8002



162-8001



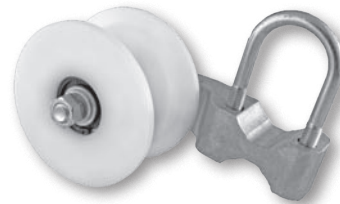
162-8011



162-8074



162-8052



162-8073

PART #	PART NAME	BEARING	SNAP RING	REPLACES PART #
162-8003	UPPER BALL WHEEL GUIDE ROLLER	162-9608	162-2401	12-400272-000
162-8002	LOWER BALL WHEEL GUIDE ROLLER - SOLID	162-9601	162-2404	12-400240-000
162-8001	LOWER BALL WHEEL GUIDE ROLLER - SPLIT	162-9601	162-2404	12-400268-000
162-8011	UPPER PIN WHEEL GUIDE ROLLER	162-9602	162-2401	12-400266-000
162-8074	SOLID UPPER BALL WHEEL GUIDE ROLLER *May order 162-8075 (Mounting Bracket) if converting from original OEM configuration	162-9606	162-2403	12-862823-000
162-8052	LOWER PIN WHEEL GUIDE ROLLER	162-9601	162-2404	12-400263-000
162-8073	SPLIT UPPER BALL WHEEL GUIDE ROLLER W/BRACKET	162-9606	162-2403	N/A
162-8075	UBWGR UNIVERSAL MOUNTING BRACKET (Hardware Included)	N/A	N/A	N/A
162-6075	UBWGR UNIVERSAL MOUNTING BRACKET (Bracket Only)	N/A	N/A	N/A

A-2 Pinsetter Parts

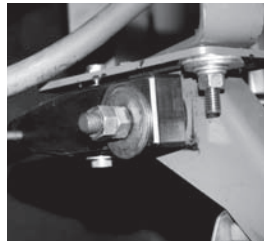
PREFERENCE SYSTEM KIT

162-8078

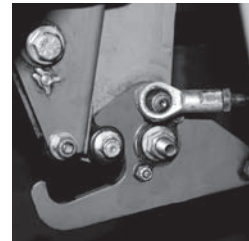
The Kegel Preference System Kit is designed to alleviate the headaches associated with the Brunswick® A-2 and Jet Back pinsetters. Minimize the problems caused by the factory design in a reasonably priced, easy to install, low maintenance kit.



This kit eliminates 12 individual parts of the OEM assembly that when not kept regularly maintained and adjusted will eventually fail.



Our UHMW preference actuator is a low maintenance, low wear portion of the kit. The simple design eliminates the OEM spring rod bumper.



A powerful magnet is used to create a positive locking and unlocking of the preference system kit.

SPRING ROD

162-8023

Replaces Part 12-400193-000

Achieve more refined adjustments with our Spring Rod. The length and thread of the shaft have been extended to allow for more specific precision. This assembly features a separate shaft and head so each part is replaceable. Don't waste money replacing the whole item if only one piece becomes damaged. Our Spring Rod is built out of tough cold rolled steel.

162-6023 - Shaft

162-6123 - Head



SPRING ROD BUSHING

162-6025

Replaces Part 12-400803-000

This Spring Rod Bushing is made from tough cold rolled steel.



SPRING ROD BUMPER

162-6050

Replaces Part 90-400123-000

Replaces Part 12-400123-000

Our Spring Rod Bumper will not break down easily like other bumpers. It has a one-piece Nylon construction that has high durability.

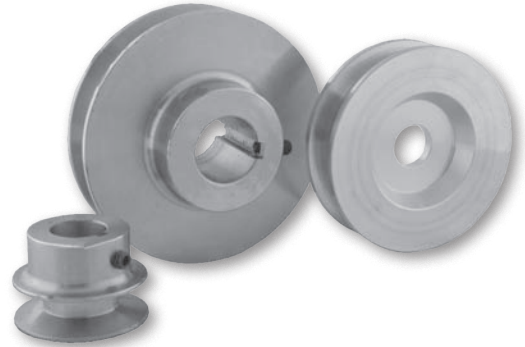


A-2 Pinsetter Parts

REDUCTION KIT

162-8100

Increase frames per stop on your machine with our Reduction Kit. Having fewer stops on your machine requires less work for pin chasers and mechanics and also leads to more satisfied customers who are not spending their time waiting for repairs. This kit accomplishes this by slowing the pinsetter run speed and allowing the pin wheel to load more efficiently. This kit comes as a set of three reduction pulleys and the related hardware.



PIN WHEEL CLUTCH IDLER PULLEY

162-8300

Having turn pan jams on your machine? Pin wheel brakes wearing through and damaging your belts? Solve this problem by eliminating the pin wheel brake with our Pin Wheel Clutch Idler Pulley.

This solid machined pulley with clutch bearing replaces the OEM Pin Wheel Brake or OEM Idler Pulley. Eliminate excessive pin wheel coasting which can cause an inconvenience and waste valuable time. When converting from the OEM Pin Wheel Brake, you will also need to order 162-8056 (Idler Arm).



162-9607 - Bearing

DEGREE WHEEL

162-6034

Replaces Part 12-100044-000

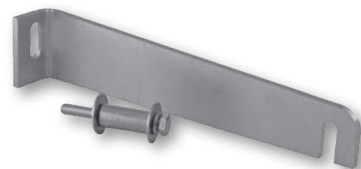
Our Degree Wheel is designed to allow you to easily locate, mark, and adjust the rake cam to fit your pinsetter. It is not only useful for making quick visual adjustments, but also looks great on your machine with its highly polished finish. This Degree Wheel is made out of high quality billet aluminum.



DETECTOR SUPPORT BRACKET

162-8068

The Detector Support Bracket reinforces the detector mount and stabilizes the assembly. This bracket also gives you the ability to level vertically.



A-2 Pinsetter Parts

PULLEYS

Greatly reduce premature belt wear and poor tracking with our Pulleys. Increase the lifespan of your machine and save money on maintenance. Our one-piece design allows for precise belt tracking and fit. All assemblies include PEER® rubber seal bearings for accessibility and maintenance.



PULLEY IDLER FOR PIT CONVEYOR

162-6020

Replaces Part 12-300071-000



PULLEY IDLER FOR FLAT BELT

162-8015

Replaces Part 12-400297-000

162-9603 - Bearing

162-2402 - Snap Ring



PULLEY IDLER FOR V-BELT

162-8021

162-9603 - Bearing

162-2402 - Snap Ring

FIZZION® PARTS CLEANER

162-8500

Fizzion Parts Cleaner removes the toughest dirt and build-up from your machine parts with ease. Regular maintenance of your pinsetter will allow your machine to run smoothly and increase the machine's lifespan. Fizzion Parts Cleaner removes rust, oil, calcium, grease, and dirt. Apply with a rag or simply soak in the solution for an intense cleaning.

Fizzion parts cleaner comes in a bag of 20-tablets. The concentrated formula is easy to store; just add water to quickly mix up the solution as you need it.



RABBIT EAR REPAIR PLATE

162-6046

Replace worn out mounting holes with this new mounting bracket.



PIN GATE STRAP

162-6007

Replaces Part 12-860808-000



Reduce pin gate failure while increasing the lifespan of this part compared to the original version. This Pin Gate Strap helps minimize machine stops and waiting time of frustrated bowlers. Our Pin Gate Strap, machined from cold rolled steel, is made thicker to increase strength and durability. It also features a deeper recessed notch which allows for better seating to help reduce pin gate failure.

A-2 Pinsetter Parts

BEARINGS & SNAP RINGS

We offer a line of high quality PEER® bearings. Due to their commitment to reliability and performance, PEER® has earned the following awards, among others:

Chrysler® Outstanding Quality Performance 2011
ZFLS™ Supplier of the Year 2008-2010
John Deere™ CROP Award 2006



BEARING	SNAP RING	FITS ASSEMBLY NUMBER
162-9601	162-2404	162-8001, 162-8002, 162-8052
162-9602	162-2401	162-8011
162-9603	162-2402	162-8015, 162-8021
162-9605	162-2404	162-8024
162-9606	162-2403	162-8073, 162-8074
162-9607	N/A	162-8300
162-9608	162-2401	162-8003

JOGGER ARM

162-8024

Replaces Part 12-300163-000

Frustrated by alignment issues? Our Jogger Arm is the answer to this problem. The UHMW insert eliminates the need for the needle bearing and spacer. The needle bearings tend to wear over time due to the fact that they don't make a full revolution. The hole in our design is always centered which cannot be done on a cast arm. This, combined with our precision machining, helps you achieve perfect alignment. This assembly is built from tough billet aluminum and also includes a PEER® rubber seal bearing.

162-9605 - Bearing

162-2404 - Snap Ring



JOGGER ARM BUSHING KIT

162-6051

Needle bearings tend to wear prematurely because they don't make a full revolution. Our Jogger Arm Bushing Kit replaces the needle bearing and spacer. It is made from durable UHMW and is sold as a set of two.

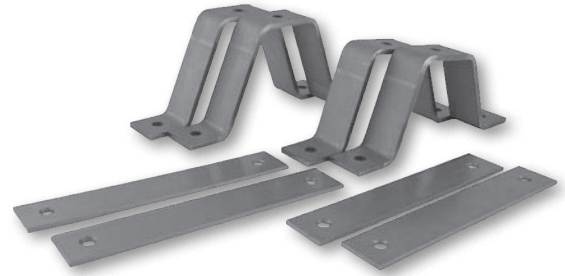


A-2 Pinsetter Parts

PIT TIERS KIT - 2 FRONT 2 REAR

162-8103

The Pit Tiers Kit is made of cold rolled steel. We have returned to the classic metal design that is stronger and will last longer. This kit is sold in sets of 4 (2 Front and 2 Rear). Pit mounts not included.

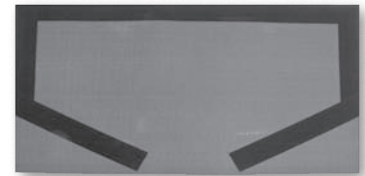


PVC PIT CARPET

162-6117

Replaces Part 12-300103-000

Prevent wear and tear with this PVC Pit Carpet made to withstand the toughest conditions. This Pit Carpet mounts easily over your worn carpet with Velcro® and is just as easy to remove for quick cleaning. This might be the last carpet you will ever need.



ZIP CARPET

162-6132

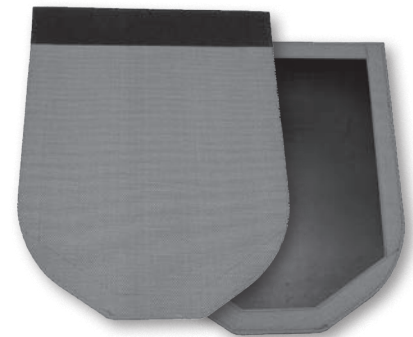
Replaces Part 12-300103-000

Looking for a great alternative to the OEM pit carpets for a reasonable price? This Zip Carpet can be used to replace your old worn pit carpets or simply Velcro® it right on top of an existing one.

PVC CARPET SAVER

162-6120

This PVC Carpet Saver covers the high impact area of your pit carpet, leaving the edges of your carpet available to hold carpet covers. It installs in seconds with ultra gripping Velcro®. Add years of life to your existing pit carpets at a fraction of the cost.

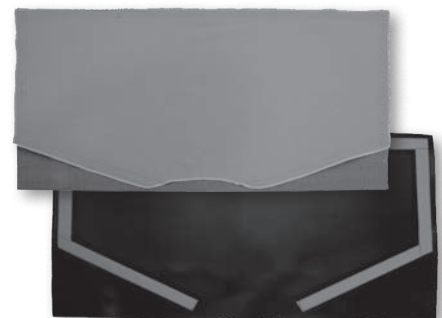


CARPET COVER - SLIPPERY

162-6188

Replaces Part 12-860725-000

If your carpet covers are slowing down your pins, try this Carpet Cover. It uses a flat woven polyester that has a slick surface and gets the pins to quickly slide off the shaker board. It is more durable, lighter, and washes better than the original version.



A-2 Pinsetter Parts

FOLLOWER LINK

162-6016

Replaces Part 12-252346-000

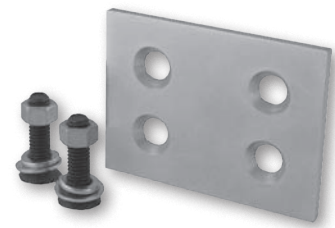
Looking for a part that will fit your machine perfectly? Our Follower Link creates the expert fit every time due to its precision machining. Avoid broken links caused by brittle castings with the durable billet aluminum construction.



PIT CUSHION REPAIR KIT

162-6045

Use our Pit Cushion Repair Kit to replace worn out mounting holes. This kit allows you to mount directly on the kickback.



TRIANGLE PLATE - NON THREADED

162-6063

TRIANGLE PLATE - THREADED

162-6064

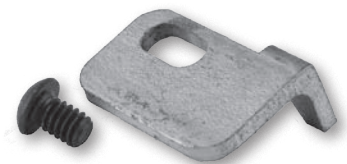
Our Triangle Plates are thicker and the threaded plate offers a secondary fastening option.



FAIL TO INDEX LATCH

162-6100

The Fail To Index Latch removes excessive play in the indexing assembly. The installation for this is quick and it is very handy in a pinch.



ADJUSTABLE TURRET SPOON

162-6009

Replaces Part 12-150283-000

The Adjustable Turret Spoon is designed to allow for perfect pin positioning in relation to the turret wires. This features a slotted adjustable design which allows the pin to drop precisely into the center of the deck bucket. Adjustments can be made front to back and left to right. This part is made from tough cold rolled steel and is designed to be used in the 1, 7, and 10 positions only.



GS Pinsetter Parts

MISCELLANEOUS

PIN DETECTOR PLATE (GS-X Only)

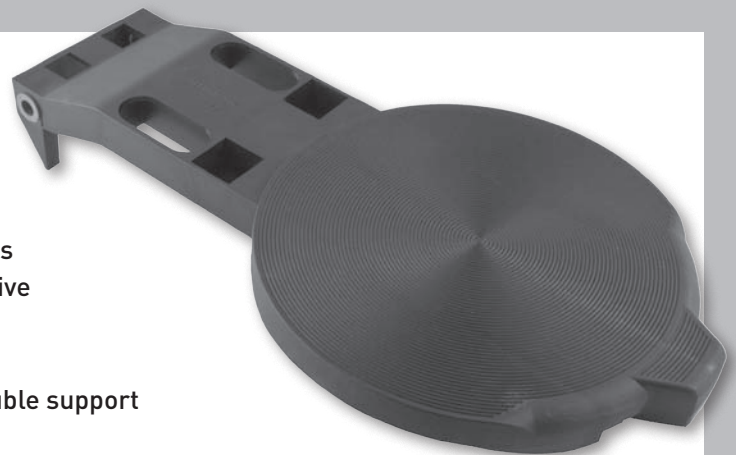
163-6001

Replaces Part 47-054298-001

Our Pin Detector Plate is made to be highly resistant at the normal wear points. The solid overall design creates a durable and more sound structure. To prevent excessive wear from pivoting, we have inserted bushings into our design.



Our ears feature a more durable double support system.

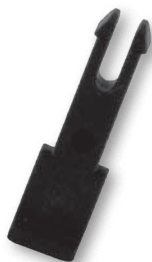


RETAINING PIN

163-6002

Replaces Part 47-094789-003

Our Retaining Pin is notched deeper for more surface contact in relation to the square spindle. Made from high quality Nylon 6.



PIVOT PIN (PKG OF 10)

163-6004

Replaces Part 47-840005-000

Rugged Nylon 6 construction.

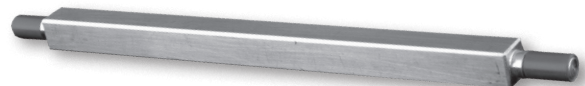


SQUARE SPINDLE WITH BUSHING

163-6003

Replaces Part 47-094790-009

What's worse than having a part on your machine that breaks all of the time? Having that part located throughout the whole machine! The current version of Square Spindle with Bushing is made out of plastic. They are tough to replace when they break and there are many spots on a machine where they could breakdown. Don't let the small parts of your machine cause big headaches. Our Square Spindle with Bushing is made out of solid aluminum to maximize the durability. Put them in your machine and allow yourself to focus on more important things.



SWEEP WAGON WHEEL

162-6099

Replaces Part 99-040249-004

Our Sweep Wagon Wheel is designed to prevent delamination (or separation). By installing parts that are more durable than the current market versions, you will end up saving money not buying as many replacements. The high grade UHMW construction of our Sweep Wagon Wheel will outlast the competitors' part and won't require the same maintenance or repairs.



GS Pinsetter Parts

IMPACT STRIP

162-6125

Replaces Part 47-021010-003

Minimize the possibility of ball damage and pin damage due to worn out impact strips. For each of our products, we have done thorough testing and research. Using our knowledge and expertise, we are able to determine the best material for each specific application. In this location, HDPE is the most impact resistant material we could choose. Unlike the original plastic injection molded parts, our Impact Strip is machined from a solid piece of HDPE.



GUTTER ADAPTER

162-6124

Replaces Part 47-041721-002

Our Gutter Adapter helps eliminate dead wood. Don't waste time collecting pins and minimize customer complaints by installing this part. Our Gutter Adapter is machined from a solid piece of HDPE.



T-BAND WHITE

163-6005

Replaces Part 11-635201-000

Our white T-Band is a heavyweight at 3.75 mm thick, but it retains its flexibility making it easy to install. It has great tracking and stays in place once adjusted. This T-Band consists of a fabric top, rubber middle, and cloth bottom. With a 1-1/8" lap seam, you will experience no delamination. Works out of the box.



HEAVY DUTY OVERFLOW SOCK

163-6006

Replaces Part 47-022531-000

This pin sock has a 6 inch wide PVC strip that bends at nearly 90 degrees and delivers the pins so they land gently and parallel to the transport band. Say good-bye to transport bands wearing out every two or three years due to repetitive pin impact. The extra wide mouth also helps prevent pin jams.



GS RED BELT 12.5 mm x 20 METERS

163-9020R

Replaces Part 47-275804-009

GS RED BELT 15 mm x 7 METERS

163-9007R

Replaces Part 47-024838-005

Achieve superior pin transport with this polyurethane belt. This smooth material was selected specifically for its ability to grip against the pin surface. Direct OEM replacement at an affordable price. Use your current welding tools.



GS Pinsetter Parts

MISCELLANEOUS

UNDERGROUND BALL WIPE

163-6023

TRAP DOOR BALL WIPE

163-6024

ACCELERATOR BALL WIPE

163-6025

PIN WIPE

163-6022

Replaces Part 47-860003-000

Replaces Part 47-092527-000



These Gamesetter Wipes are made from a durable cotton weave that will keep the ball and pin transfer areas free from oil and dirt for many years to come. Machine washable. Velcro® included where applicable.

ELECTRICAL

PIN COUNT SWITCH For GS-98 and GS-X

163-1202

Replaces Part 47-014918-003

Ensure perfect actuation time and time again with our Pin Count Switch. This design features a metal spring in place of the pin count switch arm, giving it the ability to actuate in any direction in 360 degrees. Easily handle pins that come off in any direction without unnecessary stress to the switch or damage to the actuator shaft.



MICROSWITCHES

We use reliable Omron® switches. Try this direct OEM replacement at an inexpensive price.

Single Omron®: 163-8001

Replaces Single Cherry (Part 47-053635-004)

Double Omron®: 163-8002

Replaces Double Cherry (Part 47-054700-004)

Single: 163-8003

Replaces Single GSX (Part 47-055323-004)



GS Pinsetter Parts

SETTING TABLE HARNESS (GS-X Only)

163-8000

Replaces Part 47-245164-001

When you look at the current Setting Table Cable, you see a variety of colored wires. Have you ever wondered why its counterpart, the Setting Table Harness, only has four standard colors? Eliminate the confusion and don't waste time trying to match up wires with our new Setting Table Harness. This harness is hand-pinned by our wiring experts at Kegel. Simplify the troubleshooting process using our color-coded wiring system designed to match your existing setting table cable assembly.



SETTING TABLE CABLE ASSEMBLY CONSOLIDATED

163-8004

Replaces Part 47-244922-004

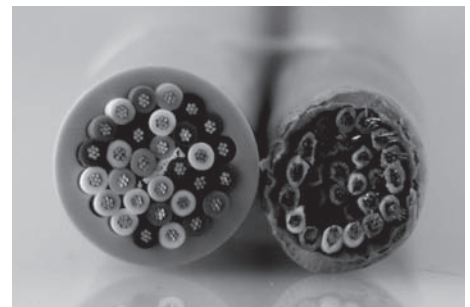


SETTING TABLE CABLE ASSEMBLY NEXGEN

163-8005

Replaces Part 47-245420-004

Our Setting Table Assemblies have cables that are 20% bigger than the current version with additional reinforcement from the flex tubing. Each wire strand is thicker, making them very durable and less prone to breaking. Our 30 conductor design incorporates three spare wires which can be easily used as replacements if you do encounter a broken or damaged wire.



Registered Trademarks are property of their respective owners.

PINSETTER PARTS

2014-15

www.kegel.net

Toll Free (US Only): 800 - 280 - BOWL (2695)

Fax: 863 - 734 - 0204

International: 863 - 734 - 0200

1951 Longleaf Boulevard
Lake Wales, FL 33859 USA



YOUR LANES | OUR PASSION