

Section C

Turret

Index

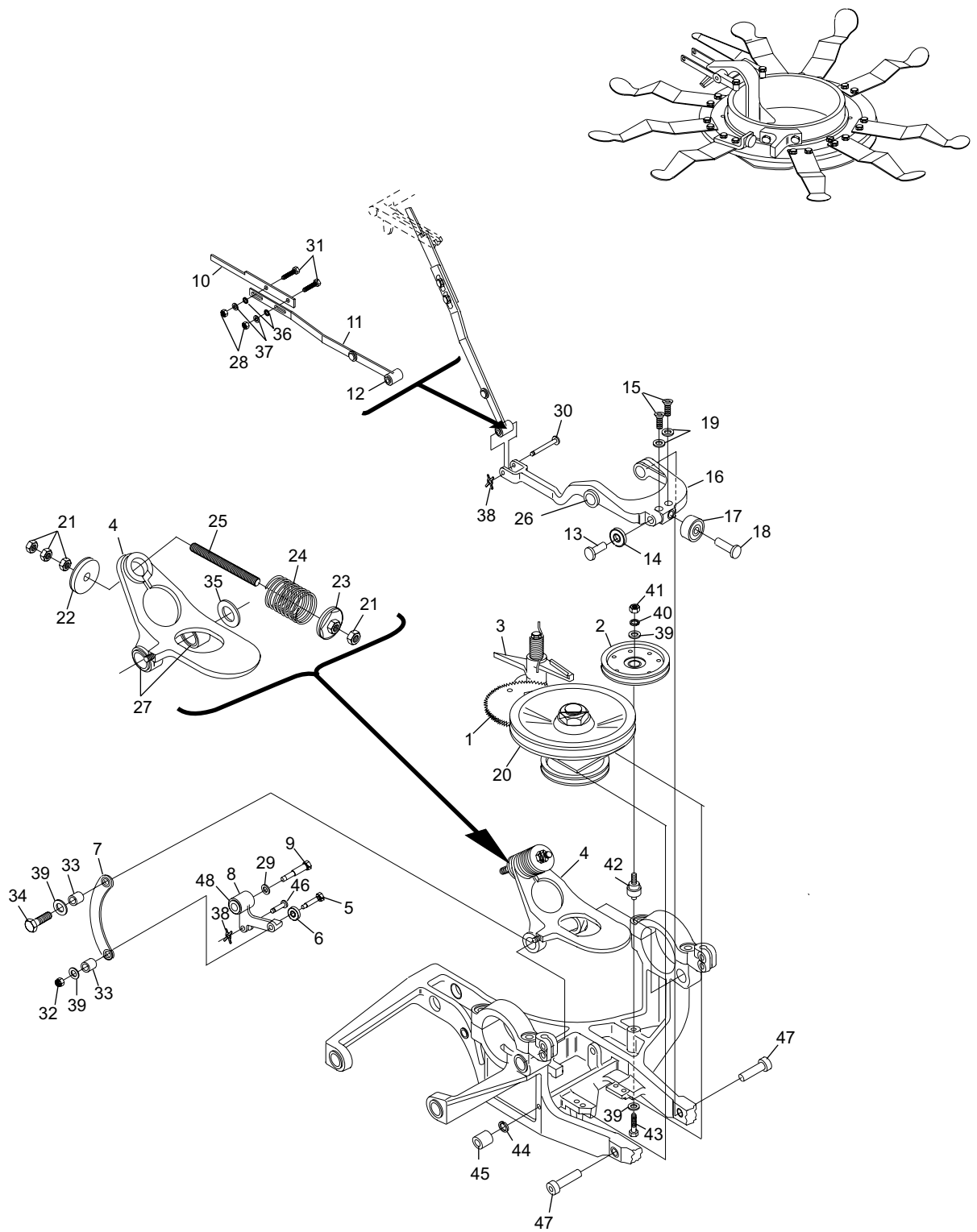
No.	Part No.	Description
1.	12-150138-000	Turret Delay Gear & Cam
	11-421035-000	Flanged Oilite Bearing
2.	12-400219-000	Idler Pulley Assembly
3.	12-150011-000	Latch Assembly
	11-421065-000	Flanged Oilite Bearing
4.	12-150064-000	Trip Lever Assembly, See Note
5.	12-150120-000	Stud
6.	12-862171-000	Ball Bearing
7.	12-150065-000	Link
8.	12-150051-000	Turret Indexing Bell Crank Assembly
9.	12-150072-000	Shoulder Screw
10.	12-150057-003	Strap, standard
	12-860808-000	Heavy Duty Pin Gate Strap
11.	12-150227-000	Linkage Assembly
12.	11-420048-000	Bearing (.1885 I.D. X .3145 O.D.)
13.	12-150056-003	Roller Stud
14.	11-500001-000	Ball Bearing
15.	11-007090-001	Flat Head Socket Cap Screw (10-24 x 5/8")
	11-015163-001	Hex Head Socket Cap Screw w/ External Tooth Lockwasher
16.	12-150013-000	Turret Stop Lever Assembly
17.	90-150303-000	Delrin Turret Stop Roller
18.	12-150056-002	Roller Stud
19.	11-198508-001	Countersunk Lockwasher (#10)
20.	12-150198-000	Clutch & Mount
21.	11-125204-001	Hex Jam Nut (3/8-16)
22.	12-150168-000	Stop Washer Assembly
23.	12-150063-000	Spring Seat Assembly
24.	12-150087-000	Compression Spring
25.	12-150062-000	Stud
26.	N.A.	Bearing
27.	11-421047-000	Bearing (.753 I.D. X .876 O.D.)
28.	11-125004-001	Hex Nut (#10-24)
29.	11-190014-001	Flat Washer (3/8)
30.	12-150158-012	X-Washer Pin
31.	11-001062-001	Hex Head Cap Screw (10-24 x 3/4")
32.	11-170106-001	Hex Nut Flexlock (1/4-20)
33.	12-150190-000	Sleeve Oilite Bearing
34.	11-110130-001	Hex Head Cap Screw (1/4-20 x 3/4")
35.	12-150157-003	Washer
36.	11-190006-001	Flat Washer - SAE (#10)
37.	11-195010-001	Lockwasher (#10)
38.	11-230000-001	X-Washer (3/32)
39.	11-190010-001	Flat Washer (1/4)
40.	11-195014-001	Lockwasher (1/4)
41.	11-125100-001	Hex Nut (1/4-20)
42.	12-150186-000	Spacer
43.	11-005196-001	Socket Head Cap Screw (1/4-20 x 3")
44.	11-195015-001	Lockwasher (5/16)
45.	12-150191-000	Internal Wrenching Nut
46.	12-150158-013	X-Washer Pin
47.	12-150166-000	Pin
48.	11-421048-000	Flanged Oilite Bearing

N.A. = No Longer Available

NOTE: Trip Lever Assembly, includes:

12-150062-000 Stud, not shown
12-150087-000 Compression Spring
12-150168-000 Stop Washer Assembly
11-421047-000 Bearing
12-150063-000 Spring Seat

Turret Clutch and Pulley Assembly (Old Style)



**Turret Clutch and Pulley Assembly
(Old Style)**

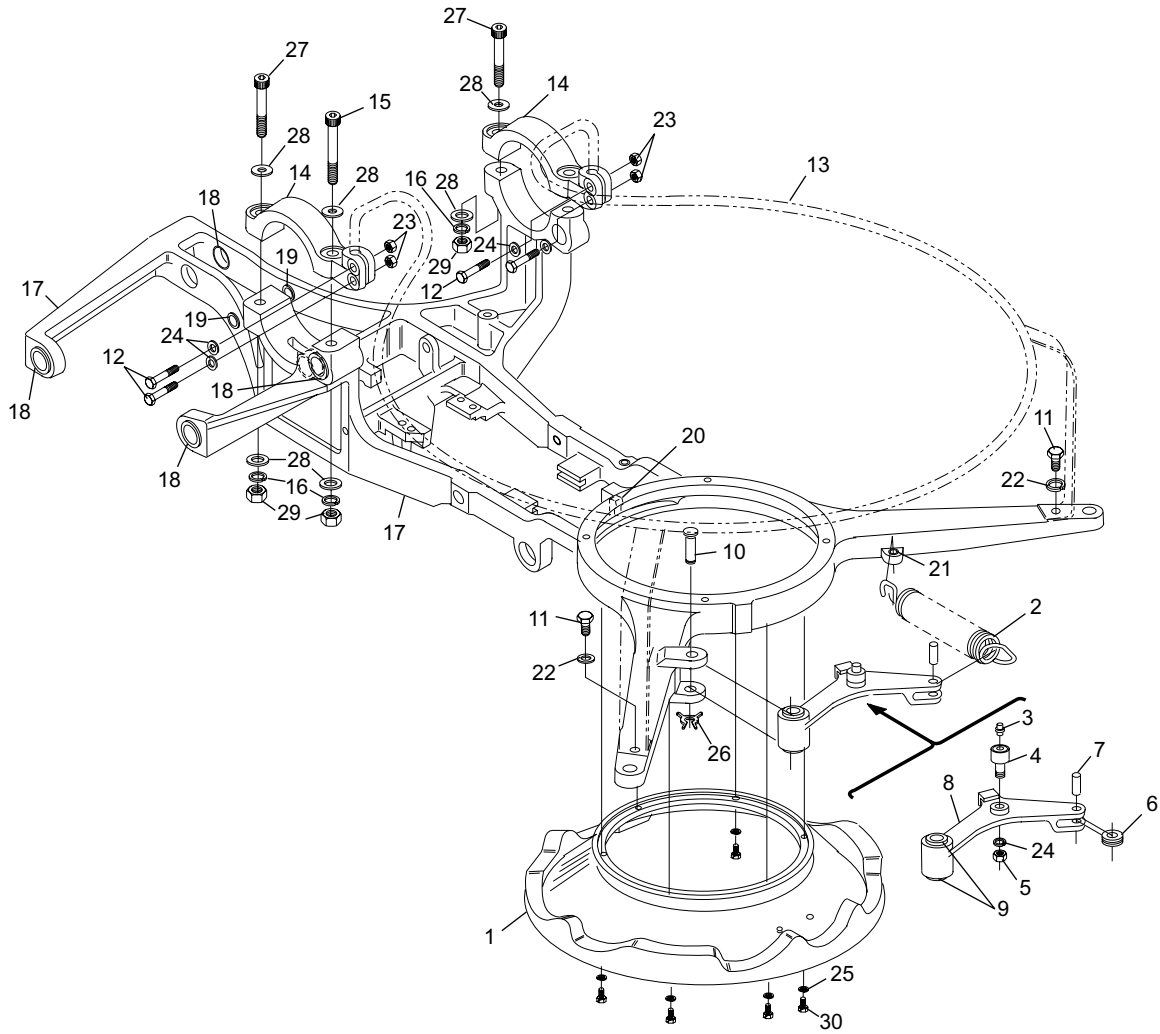
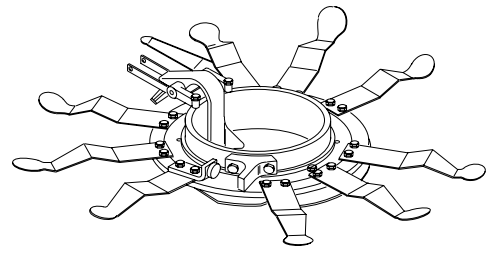
Index

No.	Part No.	Description
1.	N.A.	Cast Turret Indexing Pulley
2.	12-150070-000	Tension Spring
3.	12-150183-000	Grease Fitting
4.	11-480001-000	Cam Follow Needle Bearing
5.	11-125101-001	Hex Nut (1/4-28)
6.	12-150130-002	Wheel
7.	11-345408-001	Roll Pin (1/4 x 3/4")
8.	12-150214-000	Turret Release Lever Assembly
9.	11-421008-000	Flanged Oilite Bearing
10.	12-150281-000	Pivot Pin
11.	11-001260-001	Hex Head Cap Screw (5/16-18 x 5/8")
12.	11-002006-001	Hex Head Cap Screw (1/4-20 x 1-1/2")
13.	12-150117-000	Halo Ring Assembly
14.	N.A.	Frame Cap (See Note)
15.	11-005357-001	Hex Head Socket Cap Screw (3/8-16 x 3-1/4")
16.	11-195016-001	Lockwasher (3/8)
17.	12-150228-000	Turret Frame Assembly
18.	11-421049-000	Bearing (.753 I.D. x .878 O.D.)
19.	11-421009-000	Bearing (.3765 I.D. X .502 O.D.)
20.	11-420006-000	Bearing (.3765 I.D. X .503 O.D.)
21.	12-200047-003	Spacer
22.	11-195015-001	Lockwasher (5/16)
23.	11-125100-001	Hex Nut (1/4-20)
24.	11-195014-001	Lockwasher (1/4)
25.	11-195010-001	Lockwasher (#10)
26.	11-230003-001	"X" Washer (3/16)
27.	11-005354-001	Hex Head Socket Cap Screw (3/8-16 x 2-1/2")
28.	11-190014-001	Flat Washer (3/8)
29.	11-125104-001	Hex Nut (3/8-16)
30.	11-006088-0	01 Button Head Socket Cap Screw (10-24 x 1/2")

N.A. = No Longer Available

NOTE: Replace old cap with 12-150229-000 and 2 each 11-005359-000 cap screws.

Turret Index Pulley Assembly



Turret Index Pulley Assembly

Index

No.	Part No.	Description
1.	12-150228-000	Turret Frame Assembly
2.	12-150229-000	Cap
3.	11-005356-001	Hex Head Socket Cap Screw (3/8-16 x 3")
4.	11-005360-001	Hex Head Socket Cap Screw (3/8-16 x 4")
5.	11-005354-001	Hex Head Socket Cap Screw (3/8-16 x 2-1/2")
6.	11-125104-001	Hex Nut (3/8-16)
7.	11-195016-001	Lockwasher (3/8)
8.	12-150289-000	Link
9.	12-150158-007	X-Washer Pin (1-3/32 X .186)
10.	12-150214-000	Turret Release Lever Assembly
11.	11-480001-000	Cam Follow Needle Bearing
12.	12-150070-000	Tension Spring
13.	11-345408-001	Roll Pin (1/4 x 3/4")
14.	11-190014-001	Flat Washer (3/8)
15.	11-420043-000	Sleeve Oilite Bearing
16.	11-421039-000	Bearing (.3135 I.D. X .440 O.D.)
17.	12-150113-000	Belt
18.	12-150059-000	Plate
19.	11-500001-000	Ball Bearing
20.	11-005178-001	Hex Head Socket Cap Screw (1/4-20 x 1/2")
21.	12-150187-000	Bottom Protector
22.	11-190006-001	Flat Washer - SAE (#10)
23.	11-195010-001	Lockwasher (#10)
24.	11-125004-001	Hex Nut (#10-24)
25.	11-007094-000	Flat Head Socket Cap Screw (10-24 x 1")
26.	N.A.	Pin Guide Block, pin necessary to stay
27.	11-230002-001	"X" Washer (5/32)
28.	12-150158-004	X-Washer Pin
29.	12-150279-000	Lever Assembly
30.	12-150158-006	X-Washer Pin
31.	11-230000-001	X-Washer (3/32)
32.	11-195014-001	Lockwasher (1/4)
33.	11-125106-001	Hex Nut (7/16-14)
34.	11-125206-001	Hex Jam Nut (7/16-14)
35.	12-150085-000	Support Rod
36.	12-150235-000	Turret Index Latch Assembly, See Note
37.	12-150157-004	Washer
38.	11-530514-000	Internal Retaining Ring (1.282 I.D.)
39.	11-005086-001	Hex Head Socket Cap Screw (10-24 x 3/8")
40.	12-150259-000	Shaft, See Note

N.A. = No Longer Available

NOTE: 12-150277-000 Shaft and Latch Assembly includes:

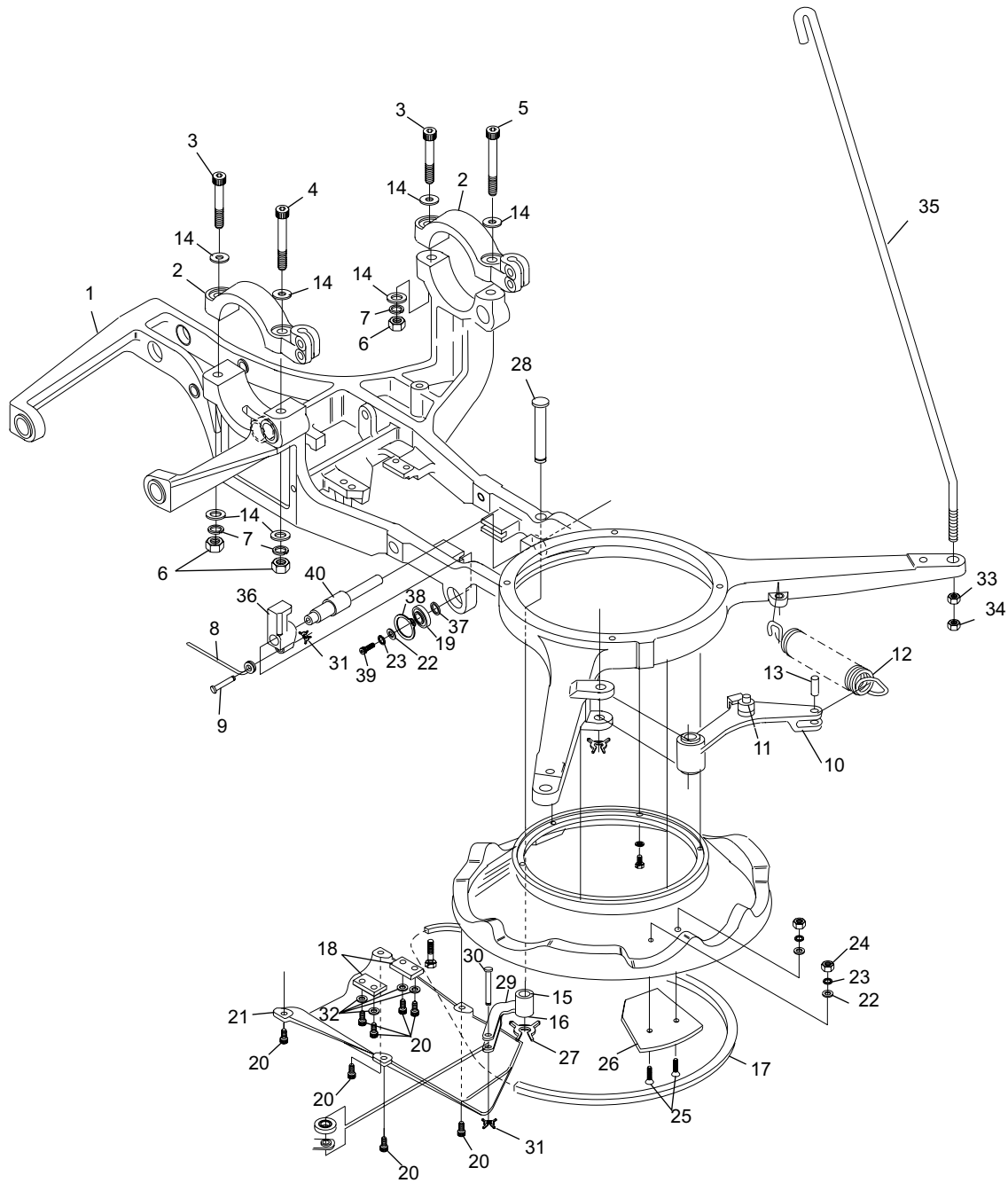
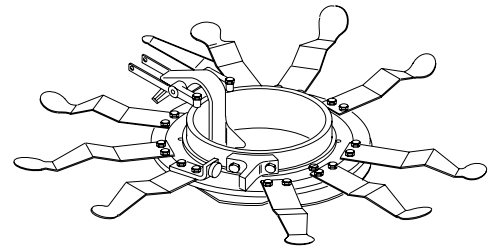
11-420032-000 Bearing (.3765 I.D. X .503 O.D.)

12-150249-000 Shaft

12-150235-000 Latch Assembly

10-381244-000 Spacer

Turret Assembly



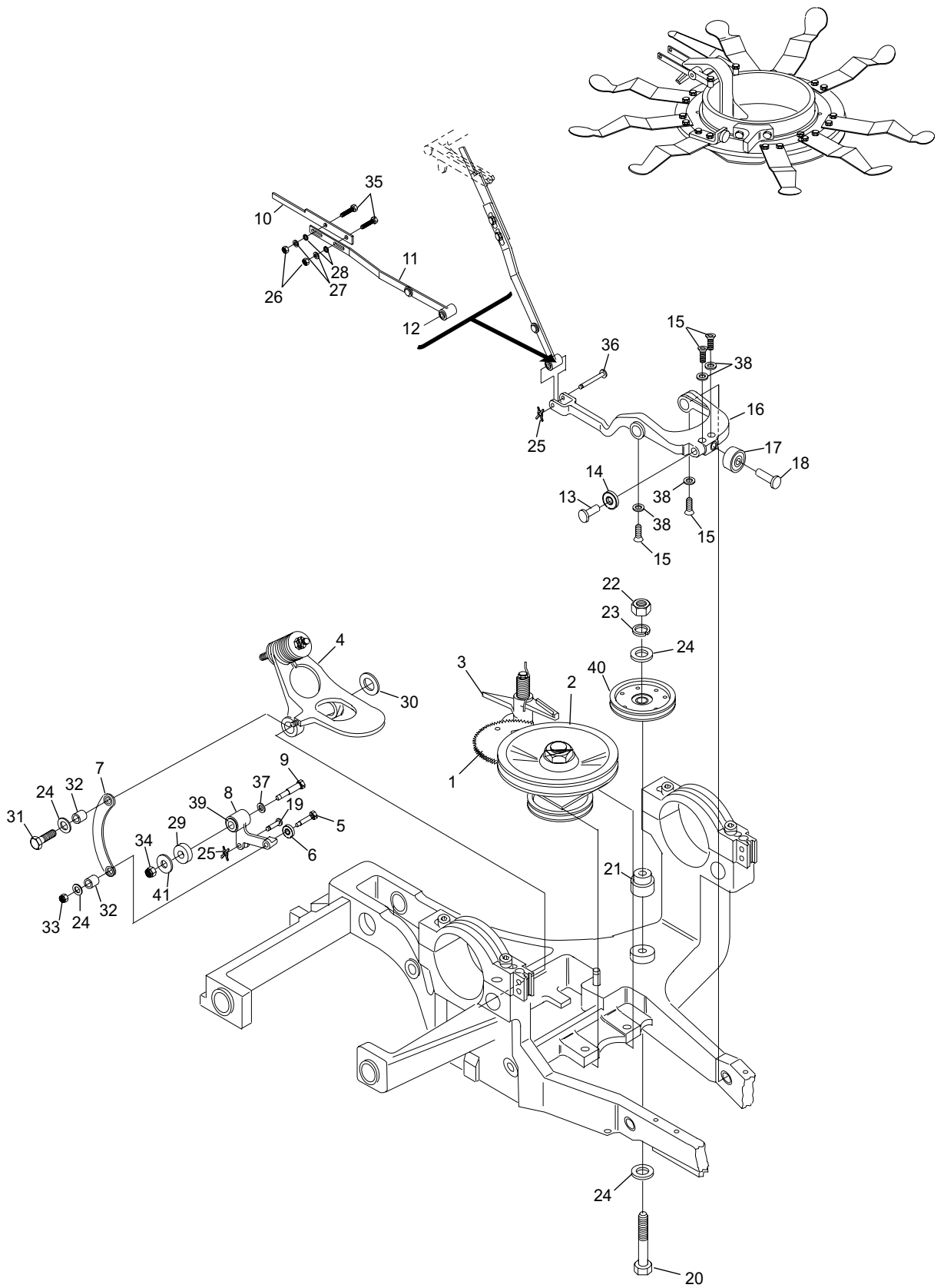
Turret Assembly

Index

No.	Part No.	Description
1.	12-150138-000	Turret Delay Gear
	11-421035-000	Flanged Oilite Bearing
2.	12-150198-000	Clutch & Mount Assembly, Early Version - See Note
3.	12-150011-000	Latch Assembly
	11-421065-000	Flanged Oilite Bearing
4.	12-150064-000	Trip Lever Assembly
	12-150062-000	Stud
	12-150087-000	Compression Spring
	12-150168-000	Stop Washer Assembly
	11-421047-000	Bearing (.753 I.D. X .876 O.D.)
	12-150063-000	Spring Seat Assembly
5.	12-150120-000	Stud
6.	12-862171-000	Ball Bearing
7.	12-150065-000	Link
8.	12-150051-000	Turret Indexing Bell Crank Assembly
9.	12-150252-000	Shoulder Screw
10.	12-150057-003	Strap
	12-860808-000	Heavy Duty Pin Gate Strap
11.	12-150227-000	Linkage Assembly
12.	11-420048-000	Bearing (.1885 I.D. X .3145 O.D.)
13.	12-150056-003	Roller Stud
14.	11-500001-000	Ball Bearing
15.	11-007090-001	Flat Head Socket Cap Screw (10-24 x 5/8")
16.	12-150231-000	Turret Stop Lever
17.	90-150303-000	Delrin Turret Stop Roller
18.	12-150056-002	Roller Stud
19.	12-150158-013	X-Washer Pin
20.	11-002008-001	Hex Head Socket Cap Screw (1/4-20 x 2")
21.	12-150186-000	Spacer
22.	11-125100-0	01 Hex Nut (1/4-20)
23.	11-195014-001	Lockwasher (1/4)
24.	11-190010-001	Flat Washer (1/4)
25.	11-230000-001	X-Washer (3/32)
26.	11-125004-001	Hex Nut (#10-24)
27.	11-195010-001	Lockwasher (#10)
28.	11-190006-001	Flat Washer - SAE (#10)
29.	12-150245-000	Spacer
30.	12-150157-003	Washer
31.	11-110130-001	Hex Head Cap Screw (1/4-20 x 3/4")
32.	12-150190-000	Sleeve Oilite Bearing
33.	11-170106-001	Hex Nut Flexlock (1/4-20)
34.	11-170010-001	Hex Nut Nylock (5/16-24)
35.	11-001062-001	Hex Head Cap Screw (10-24 x 3/4")
36.	12-150158-012	X-Washer Pin
37.	11-190014-001	Flat Washer (3/8)
38.	11-198508-001	Countersunk Lockwasher (#10)
39.	11-421048-000	Flanged Oilite Bearing
40.	12-400219-000	Idler Pulley Assembly
41.	11-190012-001	Flat Washer - SAE (5/16)

NOTE: The Turret Clutch & Mount Assembly 12-150198-000 is for machine S/N 1583 to S/N 12844, please see page 16C for a more detailed drawing. For machines S/N 12844 to 61194, please see page 18C.

Turret Assembly



Turret Assembly

Index

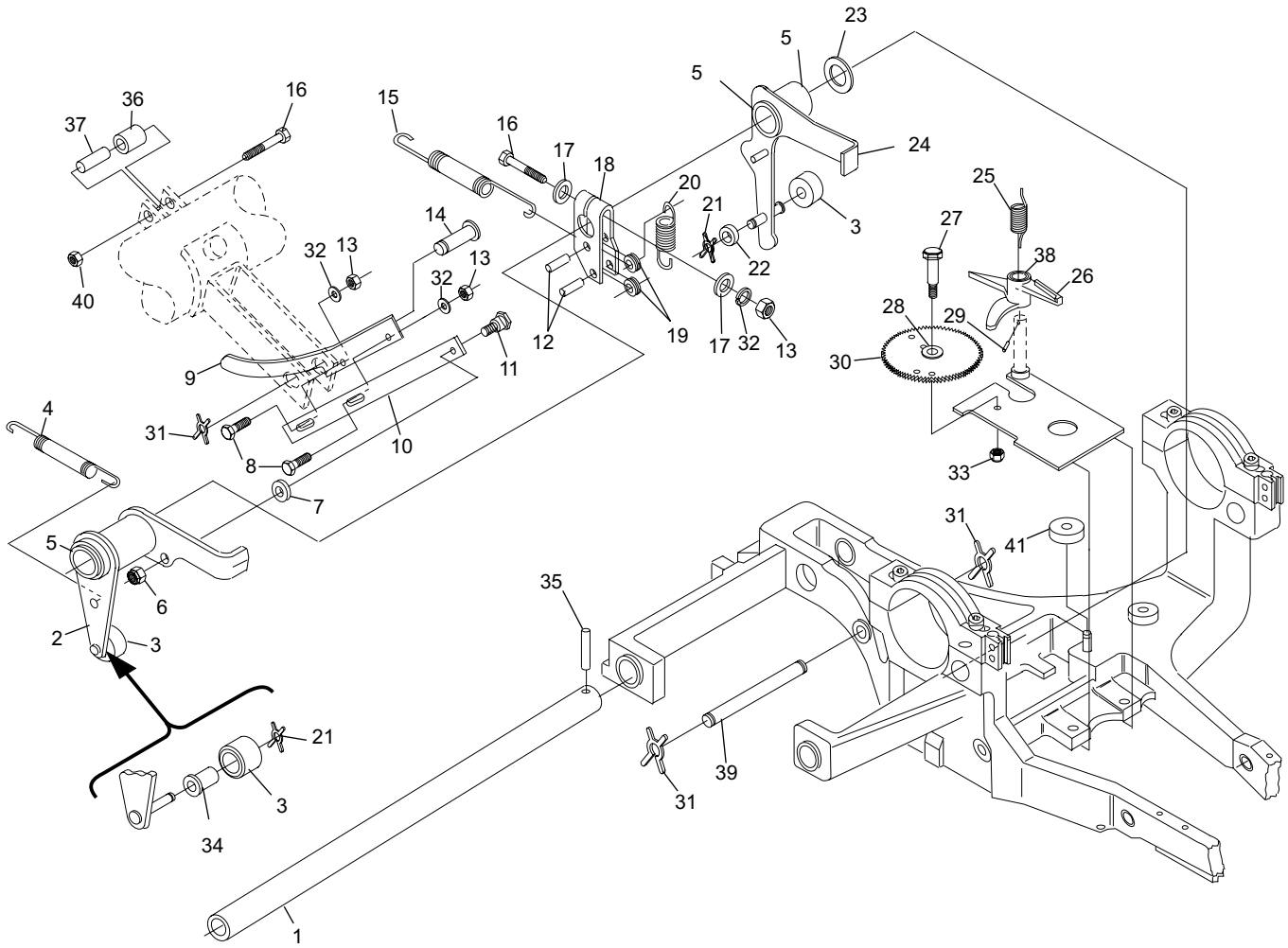
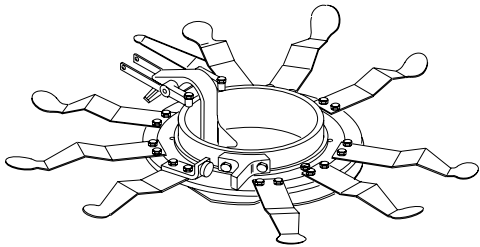
No.	Part No.	Description
1.	12-150143-002	Shaft
2.	12-150176-000	L.H. Blocking Finger
3.	12-150142-002	Bumper
4.	12-150213-000	Restricted Drop Spring
5.	11-421038-000	Flanged Bronze Bearing
6.	11-170104-001	Flexlock Hex Nut (#10-24), for machines prior to 12801
	11-170106-001	Hex Nut Flexlock (1/4-20), for machines serial #12801 and up
7.	12-150209-002	Restricted Drop Spacer
8.	11-001183-001	Hex Head Cap Screw (1/4-20 x 7/8")
9.	12-150298-000	Restricted Drop Link, Lower
10.	12-150210-000	Restricted Drop Link, Upper
11.	11-106525-000	Hex Head Socket Cap Screw (5/16 x 3/8 1/4-20), for serial #12801 and up 12-150195-000 Latch Shoulder Screw, for machines prior to serial #12801 - See Note 3
12.	11-345304-000	Roll Pin (3/16 x 1/2")
13.	11-125100-001	Hex Nut (1/4-20)
14.	12-150158-016	X-Washer Pin, See Note 1
15.	12-150025-000	Tension Spring
16.	11-001190-001	Hex Head Cap Screw (1/4-20 x 1-3/4")
17.	11-190010-001	Flat Washer (1/4)
18.	12-150271-000	Lever & Spring Wheel Assembly
19.	12-150130-005	Spring Wheel
20.	12-150215-000	Spring, for machines prior to 12844
	12-150272-000	Spring A A-2, for machines 12844 and up
21.	11-230001-001	X-Washer (1/8)
22.	12-150130-006	Wheel
23.	12-150157-002	Washer
24.	12-150200-000	R.H. Blocking Finger
25.	12-150012-000	Torsion Spring
26.	12-150011-000	Latch Assembly
27.	12-150254-000	Stud
28.	11-421035-000	Flanged Oilite Bearing
29.	11-360365-001	Spirol Pin (1/8 x 1-1/8")
30.	12-150138-000	Turret Delay Gear
31.	11-230003-001	"X" Washer (3/16)
32.	11-195014-001	Lockwasher (1/4)
33.	11-170010-001	Hex Nut Nylock (5/16-24)
34.	11-421037-000	Bearing (.253 I.D. X .377 O.D.)
35.	11-360466-000	Spirol Pin (3/16 x 1-1/4")
36.	12-150282-000	Roller
37.	12-150209-004	Spacer
38.	11-421065-000	Flanged Oilite Bearing
39.	12-150023-002	X-Washer Pin
40.	11-170007-001	Hex Nut Nylock (1/4-20)
41.	12-150246-000	Bumper (1-1/16")
	12-150246-002	Bumper (1-1/4")

NOTE 1: Use 12-150158-014 (1-1/16" Pin) or 12-150158-016 (1-57/64" Pin) depending on bracket size

NOTE 2: Order 11-421037-000 Bearing and 11-23001-001 X-Washer, for machines so equipped, not shown.

NOTE 3: Bolt T153A & nut T154 can replace screw T153 and nut T152 in machines prior to serial #12801, provided that the mating hole in the latch assembl T151 is resized to 1/4".

Turret Assembly (New Style)



**Turret Assembly
(New Style)**

Index

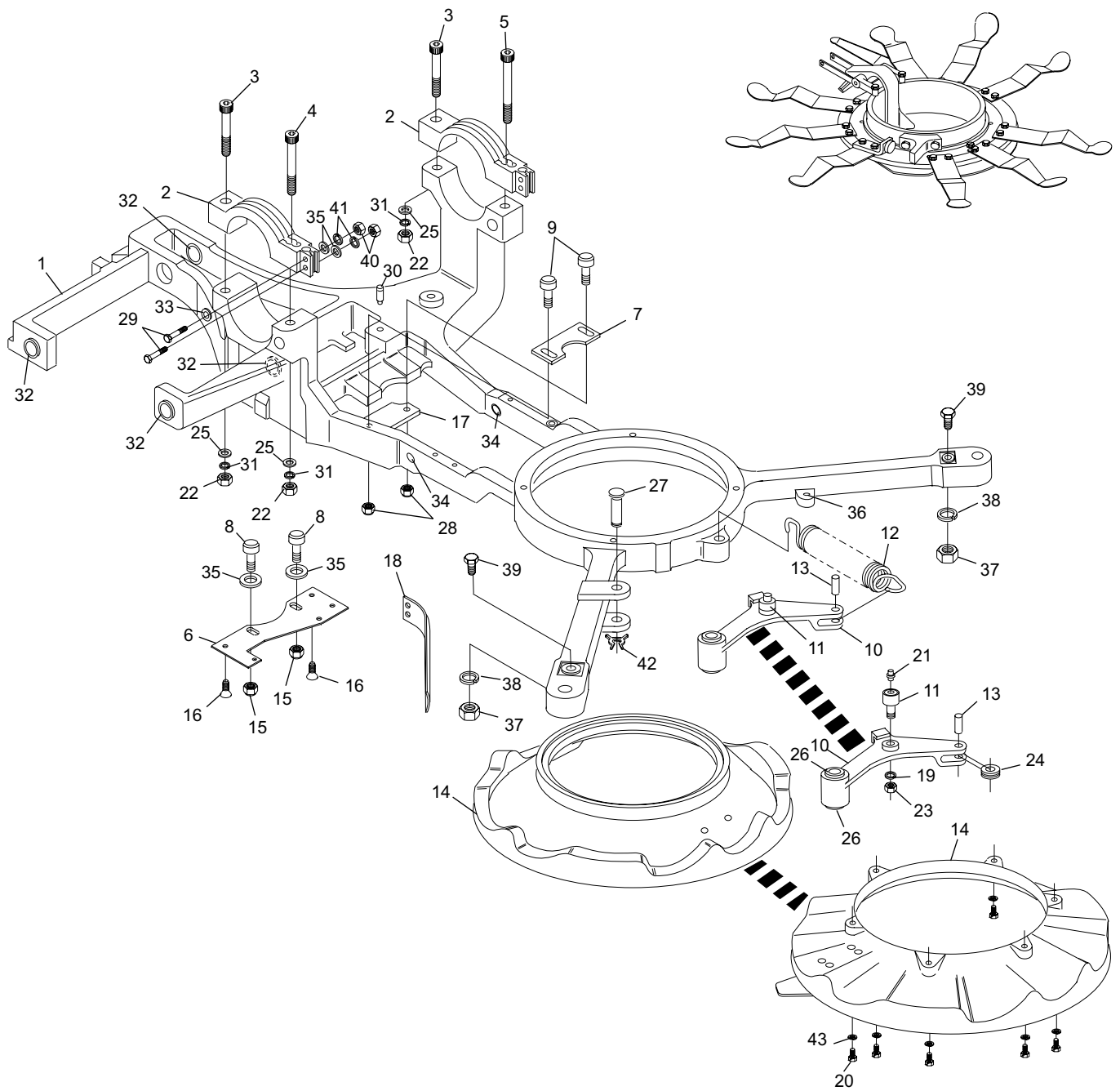
No.	Part No.	Description
1.	12-150228-000	Turret Frame Assembly
2.	12-150229-000	Cap
3.	11-005356-001	Hex Head Socket Cap Screw (3/8-16 x 3")
4.	11-005360-001	Hex Head Socket Cap Screw (3/8-16 x 4")
5.	11-005354-001	Hex Head Socket Cap Screw (3/8-16 x 2-1/2")
6.	12-150248-000	Bracket
7.	12-150261-000	Plate
8.	12-150242-000	Slide
9.	12-150260-000	Slide
10.	12-150214-000	Turret Release Lever Assembly, does not include cam follower
11.	11-480001-000	Cam Follow Needle Bearing
12.	12-150070-000	Tension Spring
13.	11-345408-001	Roll Pin (1/4 x 3/4")
14.	12-150290-000	Turret Index Pulley Assembly, See Note
15.	11-170008-001	Hex Nut Nylock (1/4-28)
16.	11-007182-001	Flat Head Socket Cap Screw (1/4-20 x 3/4")
17.	12-150250-000	Stop
18.	N.A.	Pin Retainer, applicable for all machines prior to S/N 29000
19.	11-195014-001	Lockwasher (1/4)
20.	11-006088-001	Button Head Socket Cap Screw (10-24 x 1/2")
21.	12-150183-000	Grease Fitting
22.	11-125104-001	Hex Nut (3/8-16)
23.	11-125101-001	Hex Nut (1/4-28)
24.	12-150130-002	Wheel
25.	11-190014-001	Flat Washer (3/8)
26.	11-421008-000	Flanged Oilite Bearing
27.	12-150281-000	Pivot Pin
28.	11-170107-001	Self-Locking Thin Nut (1/4-28)
29.	11-002006-001	Hex Head Cap Screw (1/4-20 x 1-1/2")
30.	12-150244-000	Stud
31.	11-195016-001	Lockwasher (3/8)
32.	11-421049-000	Bearing (.753 I.D. X .878 O.D.)
33.	11-421009-000	Bearing (.3765 I.D. X .502 O.D.)
34.	12-150255-000	Flanged Oilite Bearing
35.	11-190010-001	Flat Washer (1/4)
36.	12-200047-003	Spacer
37.	11-125102-001	Hex Nut (5/16-18)
38.	11-195015-001	Lockwasher (5/16)
39.	11-001270-001	Hex Head Cap Screw (5/16-18 x 1-3/4")
40.	11-125100-001	Hex Nut (1/4-20)
41.	22-195014-001	Lockwasher (1/4)
42.	11-230003-001	"X" Washer (3/16)
43.	11-195010-001	Lockwasher (#10)

N.A. = No Longer Available

NOTE: When replacing cast pulley, order: 12-150290-000, 12-150289-000,

12-1502779-000 (2 each), 12-150206-000, 12-150307-000, and 12-150293-000 (2 each)

Turret Index Pulley Assembly

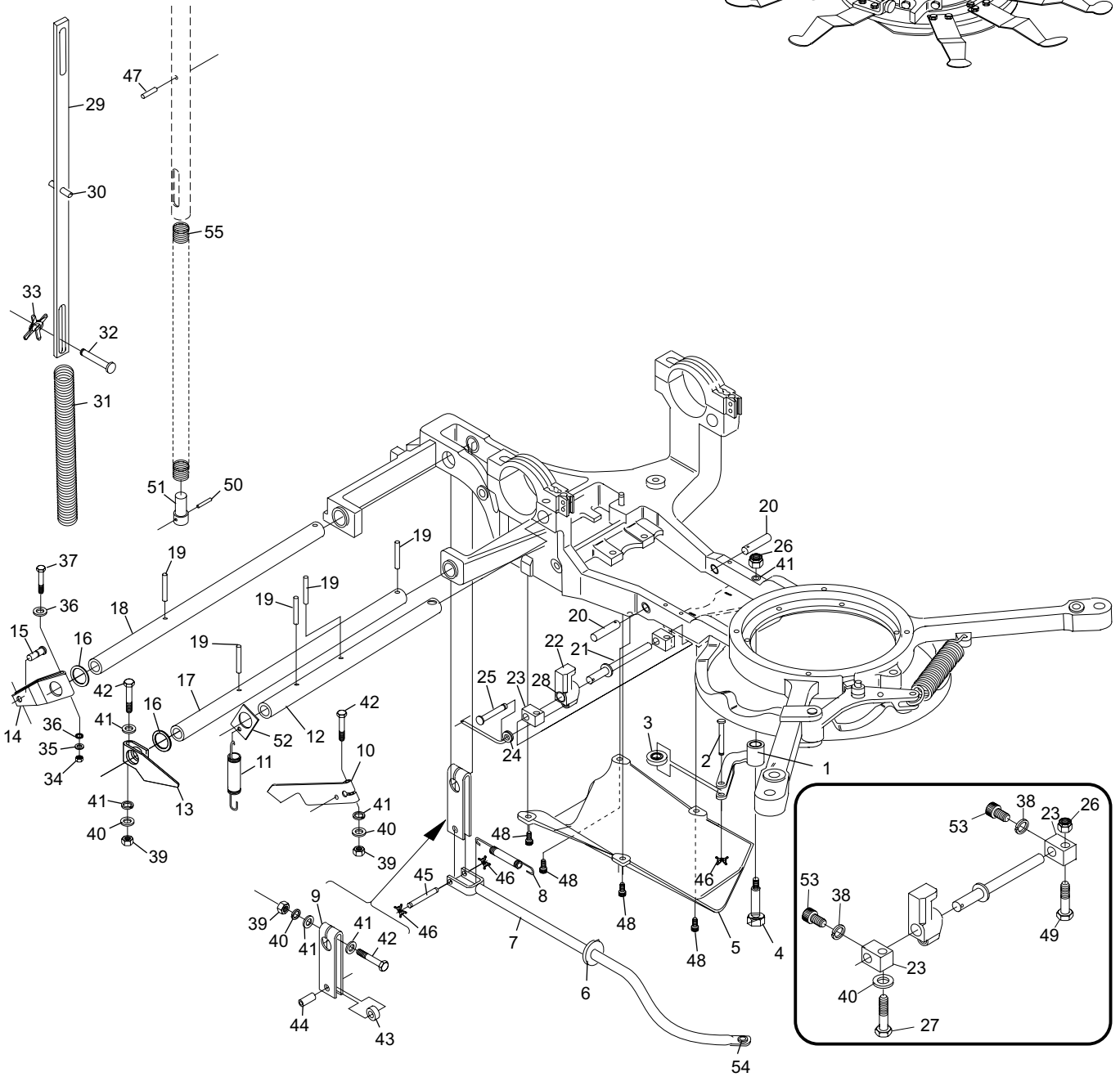
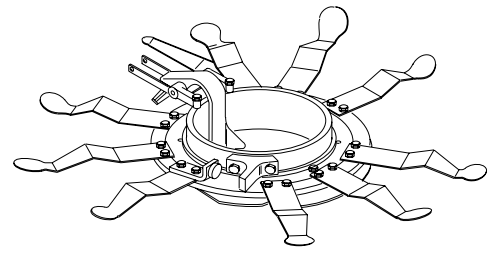


Turret Index Pulley Assembly

Index

No.	Part No.	Description
1.	12-150279-000	Lever Assembly
	11-420043-000	Sleeve Oilite Bearing
	11-421039-000	Bearing (.3135 I.D. X .440 O.D.)
2.	12-150158-006	X-Washer Pin
3.	12-150226-000	Roller & Bearing Assembly
4.	12-150247-000	Stud
5.	12-150187-000	Bottom Protector
6.	12-150142-003	Bumper
	12-150287-000	Interlock Link and Lever Assembly, not shown
7.	12-150234-000	Interlock Link Assembly
8.	12-150132-000	Tension Spring
9.	12-150147-000	Lever Assembly
10.	12-150111-000	Latch
11.	12-150090-000	Tension Spring
12.	12-150069-000	Roll Pin (3/16 x 5/8")
13.	12-150144-000	Lever
14.	12-150145-000	Lever
15.	12-150071-000	Pin
16.	12-150157-003	Washer
17.	12-150143-003	Interlock Shaft
18.	12-150143-002	Shaft
19.	11-360466-000	Spiral Pin (3/16 x 1-1/4")
20.	12-150236-000	Pin
21.	12-150259-000	Shaft
22.	12-150235-000	Turret Index Latch Assembly
23.	12-150293-000	Shaft Clamp
24.	12-150289-000	Link
25.	12-150158-007	X-Washer Pin (1 3/32 X .186)
26.	11-170008-001	Hex Nut Nylock (1/4-28)
27.	11-002006-001	Hex Head Cap Screw (1/4-20 x 1-1/2")
28.	12-150256-000	Bronze Bearing
29.	12-100904-000	Link Clutch Release Lever
30.	11-345310-001	Roll Pin (3/16 x 7/8")
31.	12-100167-000	Spring
32.	12-100166-007	X-Washer Pin
33.	11-230001-001	X-Washer (1/8)
34.	11-125102-001	Hex Nut (5/16-18)
35.	11-195015-001	Lockwasher (5/16)
36.	11-190012-001	Flat Washer - SAE (5/16)
37.	11-001270-001	Hex Head Cap Screw (5/16-18 x 1-3/4")
38.	11-196008-001	Hi-Collar Lockwasher (#10)
39.	11-125100-001	Hex Nut (1/4-20)
40.	11-195014-001	Lockwasher (1/4)
41.	11-190010-001	Flat Washer (1/4)
42.	11-001190-001	Hex Head Cap Screw (1/4-20 x 1-3/4")
43.	12-150125-000	Roller
44.	11-420000-000	Sleeve Oilite Bearing
45.	12-150023-007	X-Washer Pin
46.	11-230000-000	Roll Pin (3/16 x 1-3/4")
47.	11-345304-000	Roll Pin (3/16 x 1/2")
48.	11-005178-001	Hex Head Socket Cap Screw (1/4-20 x 1/2")
49.	11-002035-001	Hex Head Socket Cap Screw (1/4-28 x 1-1/4")
50.	11-345154-000	Roll Pin (1/8 x 1/2")
51.	12-150149-000	Plunger
52.	12-150088-000	Spring Hook
53.	11-005118-001	Hex Head Socket Cap Screw (10-32 x 1/2")
54.	11-421061-000	Flanged Oilite Bearing
55.	12-150127-000	Spring

Turret Assembly



Turret Assembly

Index		
No.	Part No.	Description
1	11-300001-001	Tubular Flat Head Rivet
2.	11-170108-000	Flexlock Hex Nut (5/16-18)
3.	N.A.	Washer
4.	N.A.	Shaft Assembly, splined
5.	N.A.	Top Hub & Disc Assembly
6.	N.A.	Bearing
7.	N.A.	Pulley
8.	N.A.	Bottom Hub & Disc Assembly (See Note 2)
9.	11-431006-000	Ball Bearing
10.	12-860804-000	Friction Disc Assembly
11.	12-150004-000	Guide
12.	11-345161-000	Roll Pin (1/8 x 15/16")
13.	12-150026-000	Spring
14.	N.A.	Washer
15.	12-150027-000	Compression Spring
16.	12-150239-000	Clutch Face Plug
17.	12-150010-000	Clutch Mount Assembly
18.	N.A.	Retaining Ring
19.	N.A.	Turret Drive Pulley-See Note 1
20.	11-345408-001	Roll Pin (1/4 x 3/4")
21.	12-150154-000	Flanged Oilite Bearing
22.	12-100162-000	Ball Valve
23.	11-125265-001	Hex Jam Nut (3/4-16)
24.	12-150220-000	Turret Clutch Drive Pulley
25.	12-150222-000	Compression Spring
26.	12-150217-000	Spacer
27.	11-431010-000	Ball Bearing
28.	12-150219-000	Pulley
29.	12-150216-000	Shaft only
30.	12-860805-000	Turret Clutch Facing Kit

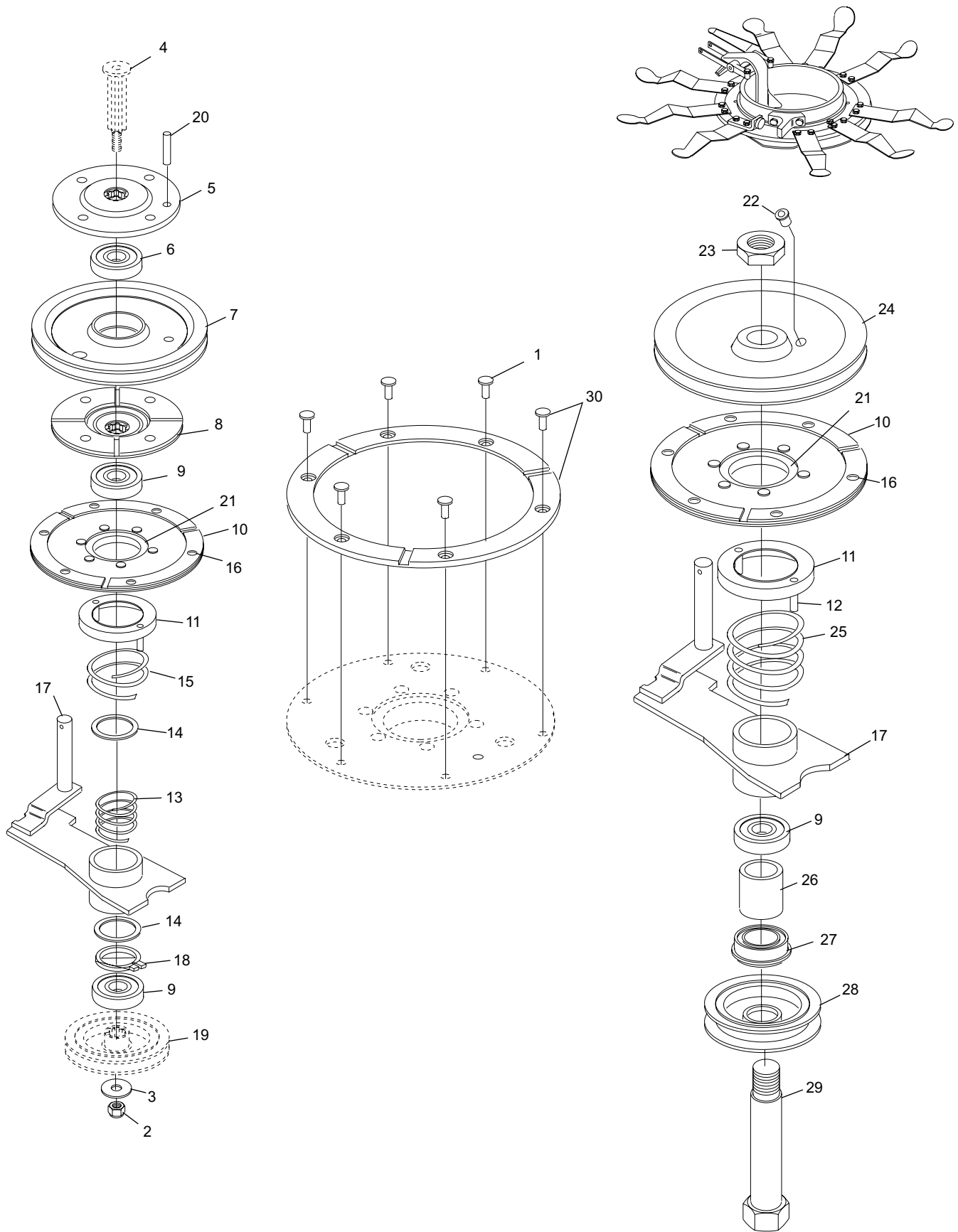
N.A.= No Longer Available

NOTE 1: Complete Clutch Assembly 12-150198-000 is interchangeable on machines prior to S/N 1583 with the addition of the following parts:

- 12-150234-000 Interlock Link Assembly*
- 12-150013-000 Turret Stop Lever Assembly*
- 11-007090-001 Flat Head Socket Cap Screw (10-24 x 5/8")*
- 11-198508-001 Countersunk Lockwasher (#10)*

NOTE 2: Use 12-150220-000 Pulley and 12-150216-000 Shaft.

Turret Clutch and Pulley Assembly (Old Style)



**Turret Clutch and Pulley Assembly
(Old Style)**

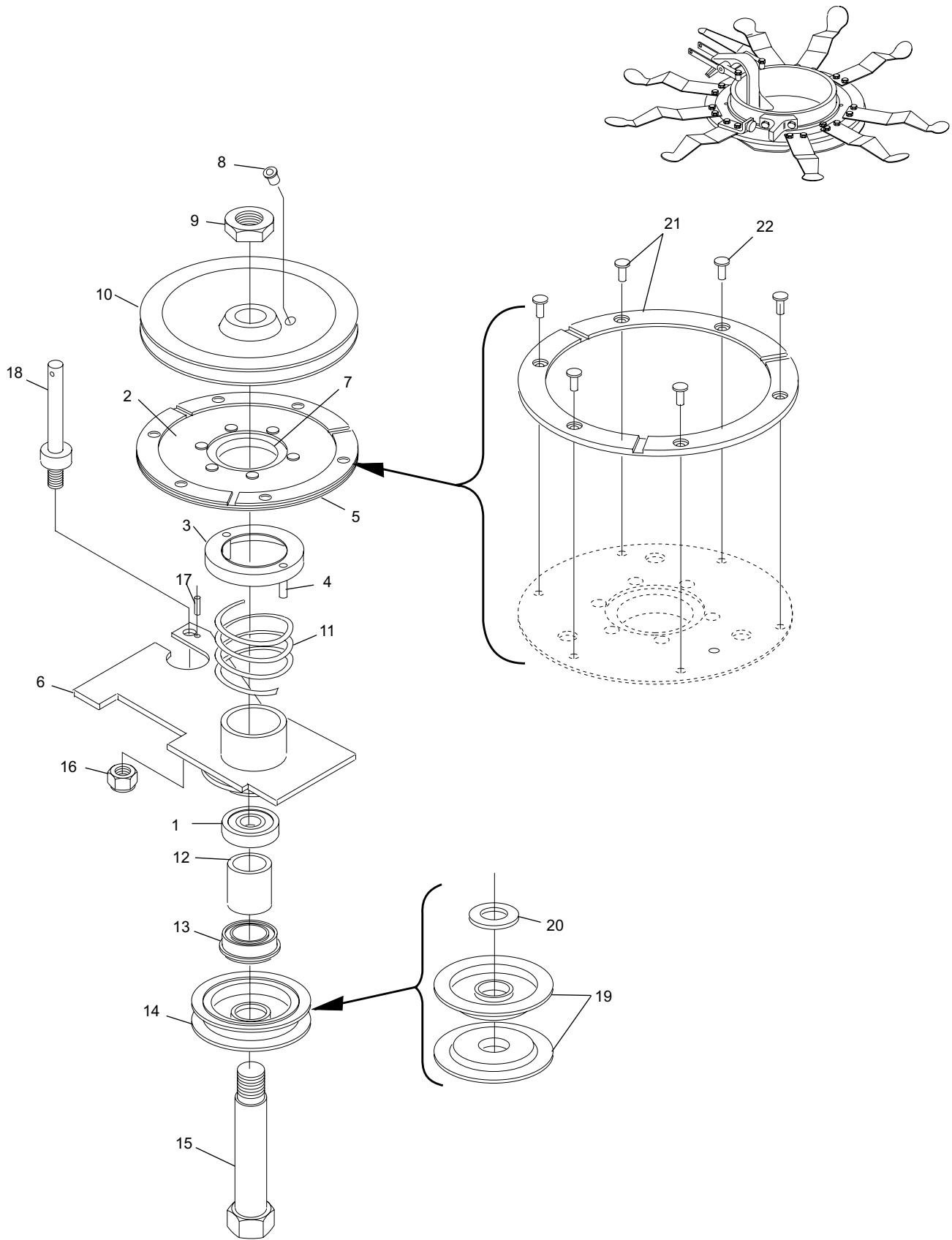
Index

No.	Part No.	Description
1.	11-431006-000	Ball Bearing
2.	N.A.	Friction Disc Assembly
3.	N.A.	Spring Guide Assembly
4.	11-345161-000	Roll Pin (1/8 x 15/16)
5.	12-150239-000	Plug Clutch Face, for machines so equipped (3 req'd)
6.	12-150258-000	Sleeve & Plate Assembly
7.	12-150154-000	Flanged Oilite Bearing
8.	12-100162-000	Ball Valve
9.	11-125265-001	Hex Jam Nut - L.H. (3/4-16)
10.	12-150220-000	Pulley Turret Drive
11.	12-150222-000	Compression Spring
12.	12-150217-000	Spacer
13.	11-431010-000	Ball Bearing
14.	12-150219-000	Pulley
15.	12-150216-000	Turret Drive Clutch Shaft
16.	11-170109-001	Flexlock Hex Nut (5/16-24)
17.	11-345154-000	Roll Pin (1/8 x 1/2)
18.	12-150253-000	Post
19.	12-150306-000	Disc
20.	12-150307-000	Spacer
21.	N.A.	Clutch Face & Rivet Replacement Kit
22.	11-300001-001	Rivet

N.A. = No Longer Available

NOTE: Replace old cap with 12-150229-000 and 2 each 11-005359-000 cap screws.

**Turret Clutch and Pulley Assembly
(New Style)**



**Turret Clutch and Pulley Assembly
(New Style)**

Index

No.	Part No.	Description
1.	11-230001-001	X-Washer (1/8)
2.	12-150023-008	X-Washer Pin
3.	11-420046-000	Sleeve Oilite Bearing
4.	12-150096-000	Tension Spring
5.	11-421026-000	Flanged Oilite Bearing
6.	12-150086-000	Turret Probe Assembly
7.	11-170006-001	Hex Nut Nylock (#10-32)
8.	12-860117-000	L.H. Bracket
	12-860118-000	R.H. Bracket (Steel Catwalk)
	12-860119-000	Center Chute Repair Kit
9.	12-150267-000	Spacer
10.	12-150268-000	Hex Head Socket Cap Screw (5/16 x 4-3/4")
11.	12-150108-000	Center Chute Assembly
12.	12-150304-003	Special Hex Head Socket Cap Screw
13.	11-195010-001	Lockwasher (#10)
14.	12-150109-000	Center Chute Repair Plate
15.	12-150079-000	Trip
16.	11-195014-001	Lockwasher (1/4)
17.	12-862874-000	Turret Ring Bearing Assembly
18.	11-480001-000	Cam Follow Needle Bearing
19.	11-421004-000	Flanged Oilite Bearing
20.	12-150158-015	X-Washer Pin
21.	11-006185-001	Button Head Socket Cap Screw (1/4-20 x 1-1/8")
22.	11-125101-001	Hex Nut (1/4-28)
23.	11-190014-001	Flat Washer (3/8)
24.	11-198007-001	External Tooth Lockwasher (3/8")
25.	11-001343-001	Hex Head Socket Cap Screw
26.	12-150066-000	Release Cam
27.	12-150264-000	Stop
28.	11-125100-001	Hex Nut (1/4-20)
29.	11-105160-001	Set Screw (1/4-20 x 1/4")
	11-345258-001	Roll Pin (5/32 x 3/4")
	N.A.	Cotter Pin, for S/N 3038 and below
30.	12-150265-000	Bumper - Turret Stop
	12-150325-000	Bumper - Turret Stop
31.	12-150284-000	Short Turret Spoon, See Note
32.	12-150266-000	Bracket
33.	12-150304-002	Special Hex Head Socket Cap Screw
34.	12-150283-000	Long Turret Spoon
35.	11-002004-001	Hex Head Cap Screw (1/4-20 x 1"), 2 required
36.	12-150299-000	Pin Release Shaft
37.	12-150237-000	Interlock Link
38.	12-150049-000	Pin Release Lever Assembly
39.	11-421045-000	Flanged Oilite Bearing
40.	12-150269-000	Bracket

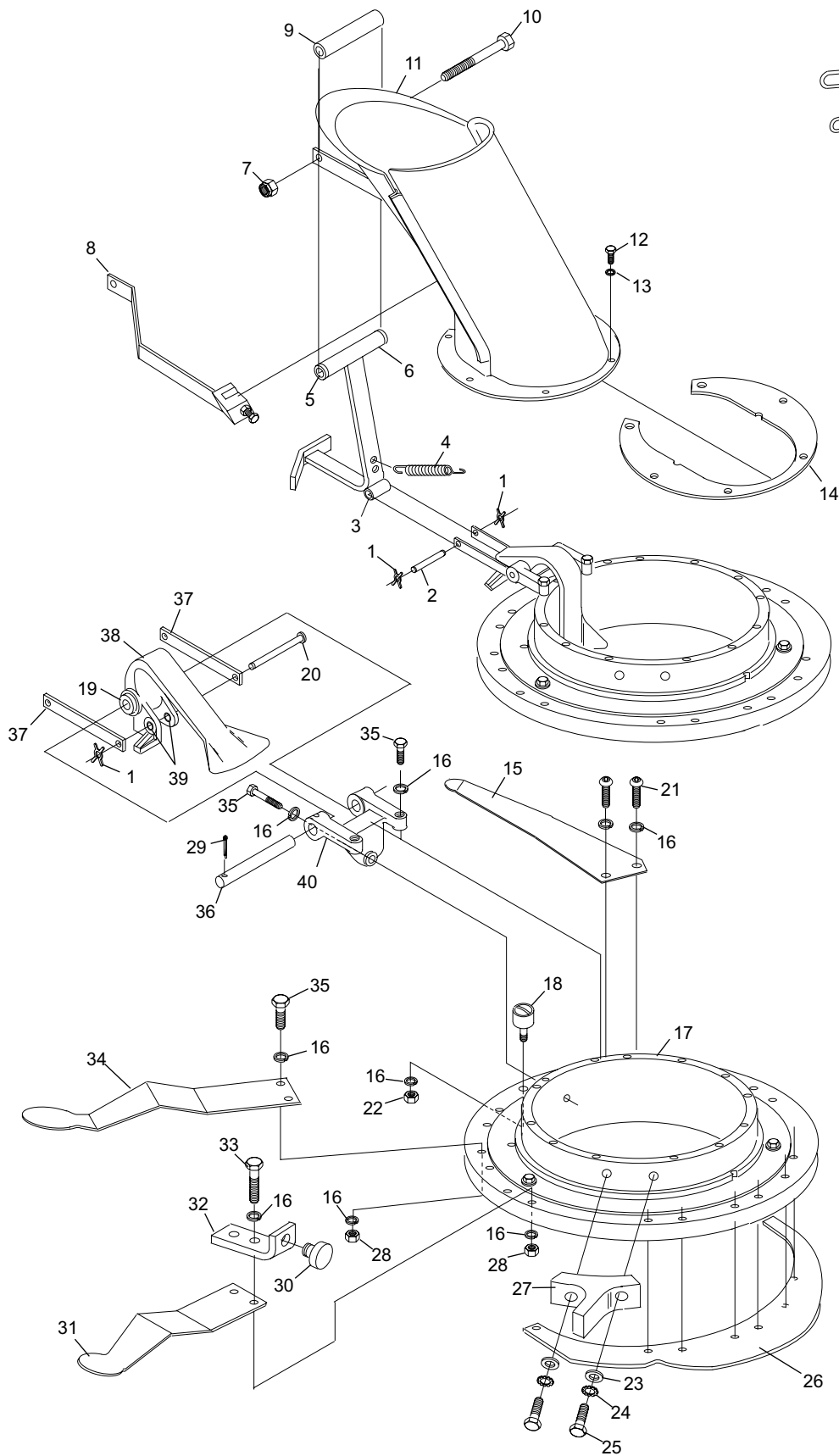
N.A. = No Longer Available

NOTE: Also order the following (not shown):

11-002004-001 Hex Head Socket Cap Screw, 2 required

11-195014-001 Lockwasher (1/4"), 2 required

Turret Ring and Index Assembly

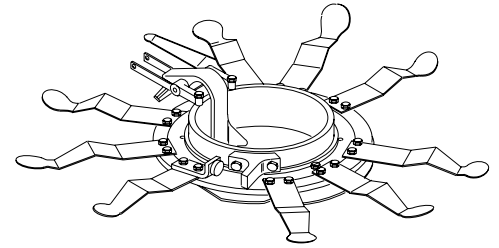
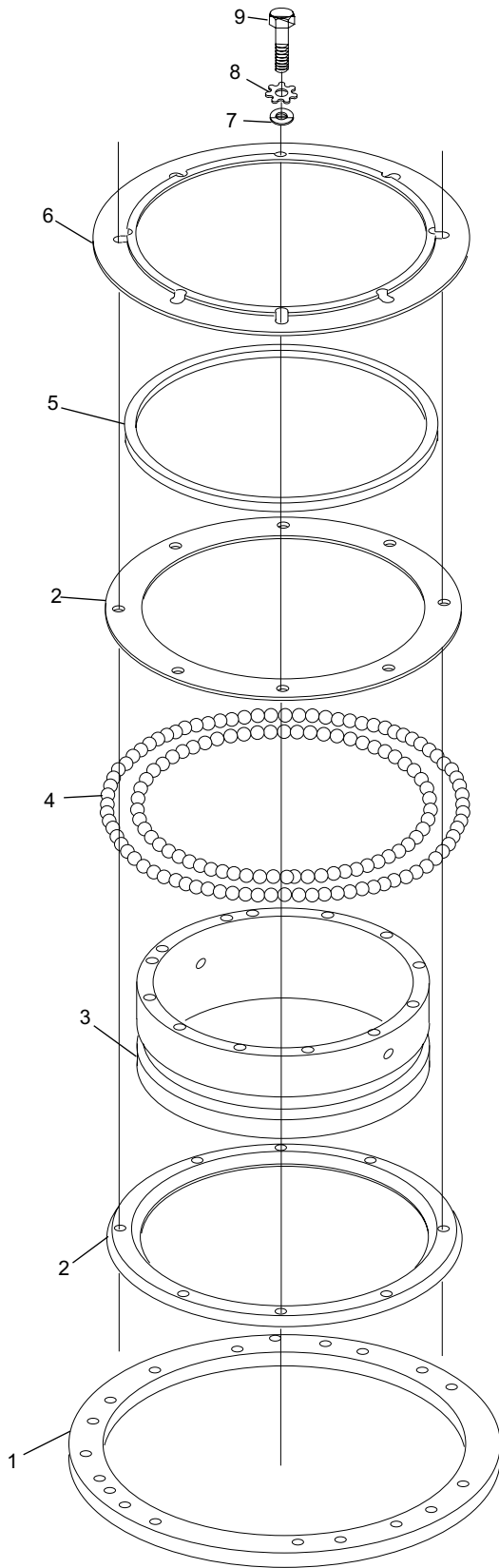


Turret Ring and Index Assembly

Index

No.	Part No.	Description
1.	12-150039-000	Spider Ring
2.	12-860581-000	Bearing Ring Set
3.	12-150040-000	Turret Ring
4.	11-575093-000	Steel Ball (3/8")
5.	12-150115-000	Seal
6.	12-150116-000	Seal Retainer
7.	11-190010-001	Flat Washer (1/4)
8.	11-198005-001	External Tooth Lockwasher (1/4")
9.	11-002001-001	Hex Head Socket Cap Screw (1/4-20 x 5/8")
10.	12-862874-000	Turret Ring Bearing Assembly (not illustrated)

Turret Ring and Bearing Assembly



10

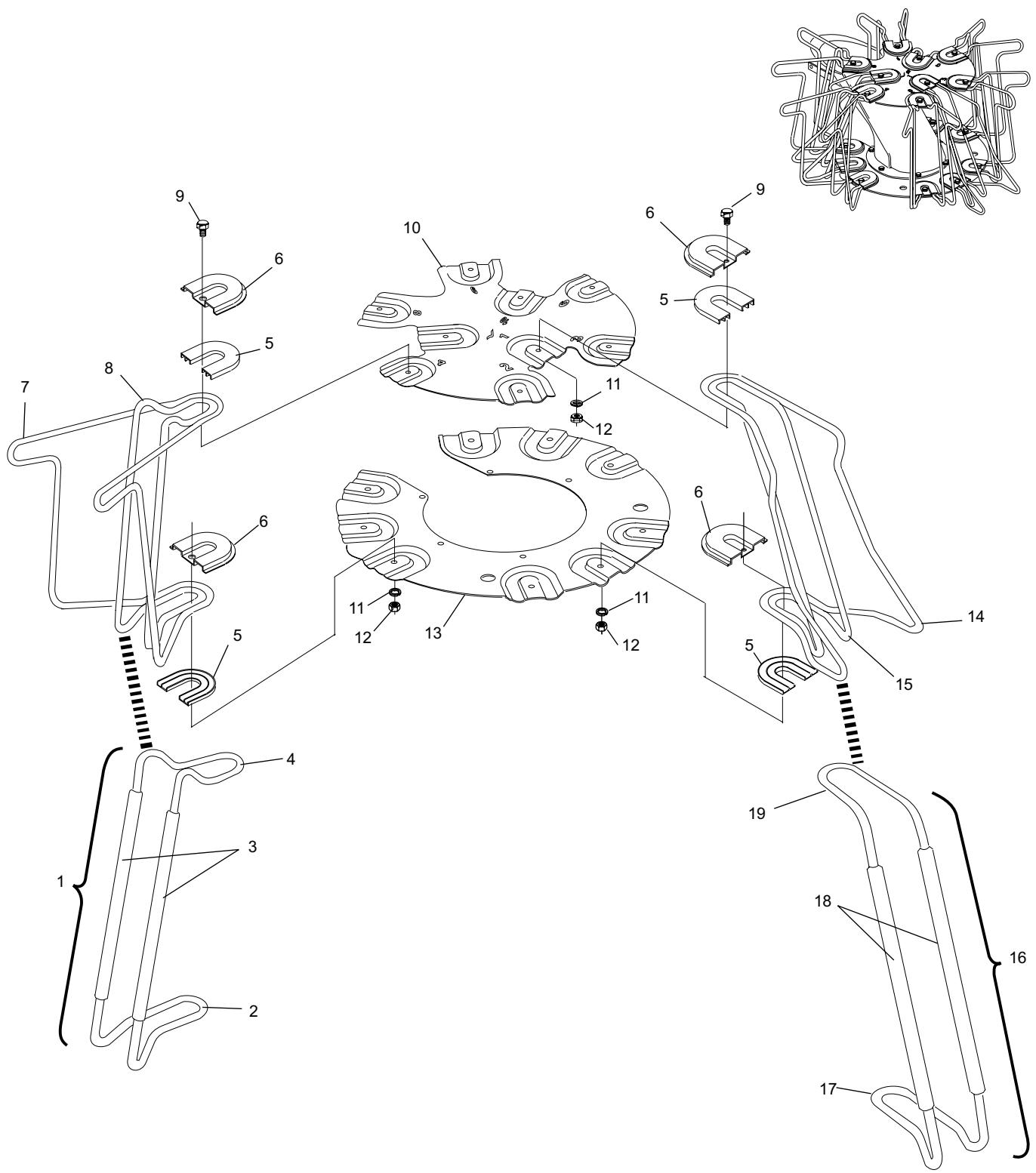
Turret Ring and
Bearing Assembly
Not Illustrated

Turret Ring and Bearing Assembly

Index

No.	Part No.	Description
1.	12-862116-000	Turret Pin Guide
2.	12-150314-000	Bottom Wire Form
3.	12-150324-000	Rod (10")
4.	12-150313-000	Wire Form
5.	12-150182-000	Turret Pin Guide Cushion
	90-150182-000	Pin Guide Wire Pad
6.	12-150181-000	Pin Guide Clamp
7.	12-150297-000	Turret Pin Guide (Pins 2, 3, 4, 6, 8, & 9 Outside)
8.	12-150294-000	Guide Wire (Pins 2, 3, 4, 6, 8 & 9 Inside)
9.	11-001182-001	Hex Head Cap Screw (1/4-20 x 3/4")
10.	12-150107-000	Upper Clamp Plate
	12-860228-600	Advanced Performance Turret Clamp Plates Kit
11.	11-195014-001	Lockwasher (1/4)
12.	11-125100-001	Hex Nut (1/4-20)
13.	12-150106-000	Lower Clamp Plate
	12-860228-600	Advanced Performance Turret Clamp Plates Kit
14.	12-150296-000	Turret Pin Guide (Pins 1, 7, & 10 Outside)
15.	12-150295-000	Guide Wire (Pins 1, 7 & 10 Inside)
16.	12-862113-000	Turret Pin Guide Wire
17.	12-150311-000	Bottom Wire Form
18.	12-150309-000	Rod
19.	12-150310-000	Top Wire Form

Turret Pin Guide



Turret Pin Guide