

Section M

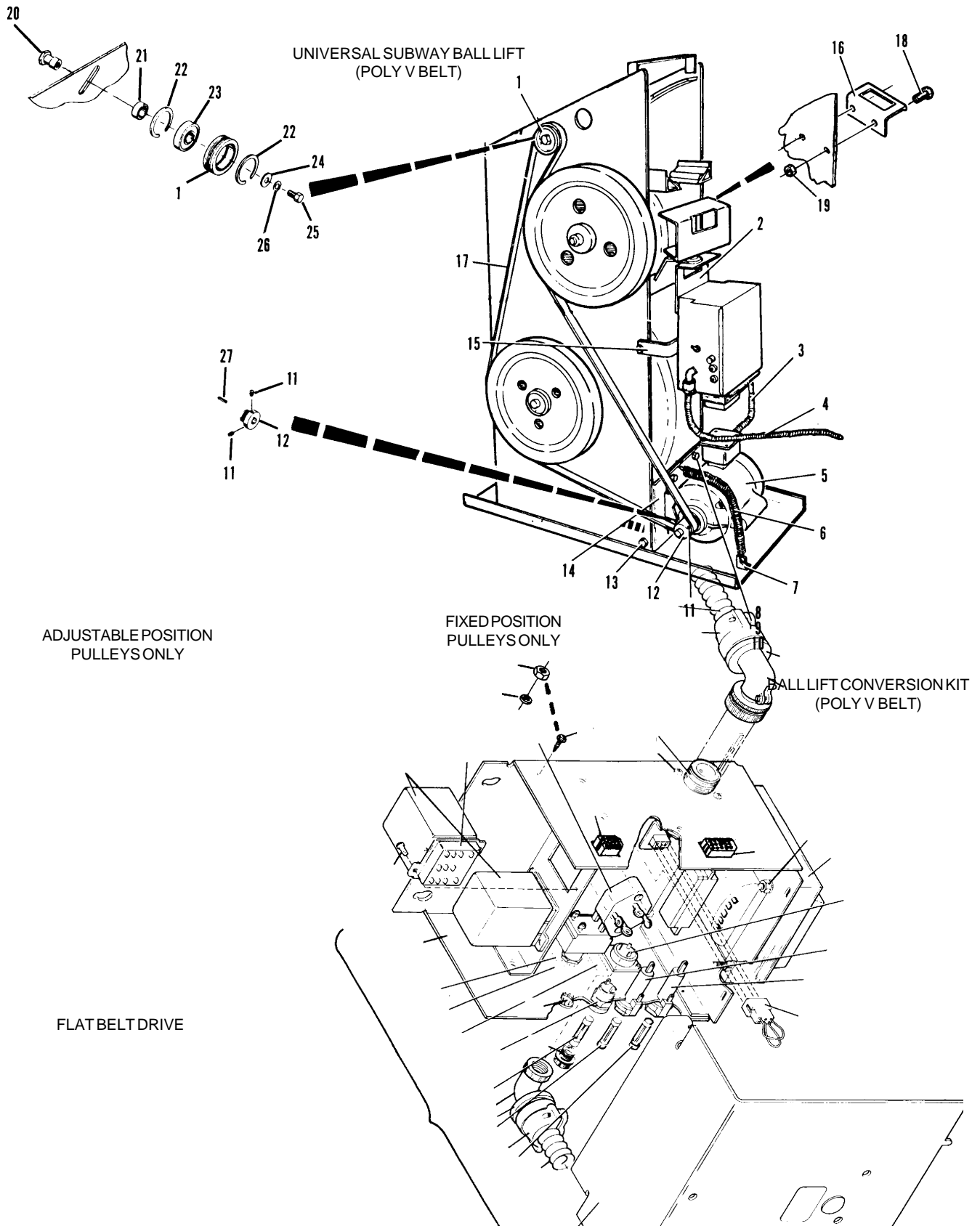
POWER LIFTS

Index No.	Part No.	Description	Index No.	Part No.	Description
1.	53-520244-000	Poly V Idler Assembly	32.	11-001264-001	Hex Hd. Cap Screw (5/16-18 x 1")
2.	53-520205-000	Mounting Bracket	33.	53-520306-000	Spacer
3.	53-520212-000	Cable Assembly	34.	11-001909-001	Hex Hd. Cap Screw (5/16-18 x 1")
4.	53-600149-000	Wire Harness Assembly	35.	53-860431-000	Poly V Conversion Kit
5.	53-860322-010	Motor (1/4 H.P. 115/230 Volt 50/60 Hz) - See Note	36.	53-520300-000	Idler Arm
	53-860322-000	Motor (1/4 H.P. 115/230 Volt 50/60 Hz) - See Note	37.	11-001270-001	Hex Hd. Cap Screw (5/16-18 x 1-3/4")
6.	53-520234-000	Tension Spring	38.	53-520304-000	Spring Post
7.	53-520231-000	Spring Anchor	39.	53-520301-000	Tension Spring
8.	11-001262-001	Hex Hd. Cap Screw (5/16-18 x 3/4")	40.	10-621058-000	Square Key (3/16 x 3/16 x 1-5/16")
9.	11-190012-001	Plain Washer (5/16)	41.	N.A.	Motor Mount Conversion Kit - Not Shown (See Note)
10.	11-170108-001	Self Locking Nut - Thin (5/16-18)	42.	11-195015-001	Lockwasher (5/16)
11.	11-101202-001	Set Screw (5/16-18 x 3/8")	43.	24-200775-000	Idler Pulley (Model A) - Aluminum
12.	53-520159-000	Poly V Sheave (1-5/8" Dia.)		24-204380-000	Idler Pulley (Model A-2) - Nylon
	53-520582-000	Poly V Sheave (1" Dia.)	44.	11-430032-000	Bearing
13.	10-003007-000	Body Fit Hex Hd. Bolt (5/16-18 x 1-1/4")	45.	11-190014-001	Plain Washer (3/8)
14.	53-520228-000	Motor Support	46.	24-205125-000	Idler Pulley Assembly
15.	53-520241-000	Standoff Bracket	47.	53-520064-000	Hub
16.	N.A.	Mounting Bracket	48.	53-860555-000	Clutch Assembly
17.	53-520235-000	Poly V Belt	49.	53-520088-000	Spacer
18.	11-001180-001	Hex Hd. Cap Screw (1/4-20 x 5/8")	50.	53-520063-000	Pulley
19.	11-170007-001	Self Locking Nut (1/4-20)	51.	24-200947-000	Flat Drive Belt
20.	53-520071-000	Bearing Stud	52.	11-001258-001	Hex Hd. Cap Screw (5/16-18 x 1/2")
21.	53-520072-000	Spacer	53.	24-200773-000	Motor Pulley (1-17/64" Dia.) - Model A
22.	11-530531-000	Retaining Ring		24-204378-000	Motor Pulley (1-29/32" Dia.) - Model A-2
23.	11-430028-000	Bearing	54.	15-600946-000	Set Screw (10-32 x 1/2")
24.	11-190514-001	Plain Washer	55.	11-005184-001	Hex Socket Hd. Cap Screw (1/4-20 x 1")
25.	11-001342-001	Hex Hd. Cap Screw (3/8-16 x 3/4")	56.	11-195014-001	Lockwasher (1/4)
26.	11-195016-001	Lockwasher (3/8)	57.	11-008148-001	Flat Socket Hd. Cap Screw (1/4-20 x 3/4")
27.	10-620057-000	Square Key (3/16 x 3/16 x 1-1/4")	58.	53-520069-000	Retaining Washer
28.	11-170009-001	Self Locking Nut (5/16-18)	59.	53-520422-000	Outer Hub
29.	53-520302-000	Bearing Stud	60.	11-500552-000	Clutch and Bearing
30.	53-520303-000	Spacer	61.	53-520421-000	Inner Ring
31.	11-190529-001	Plain Washer	62.	11-533019-000	Retaining Ring

N.A. = No Longer Available

NOTE: If your ball lift is equipped with a 1140 RPM motor, order 53-860322-010. If your ball lift is equipped with a 1725 RPM motor, order 53-860322-000. Also, if your ball lift was originally supplied with a flat belt drive, order in addition to the motor, one each 53-860468-000 Motor Mount Conversion Kit. The new style motor will not fit on the old mounting plate.

Universal Poly V Subway Ball Lift, Flat Belt Drive (A & A-2) & Conversion Kit



**Universal Poly V Subway Ball Lift,
Flat Belt Drive (A & A-2) & Conversion Kit**

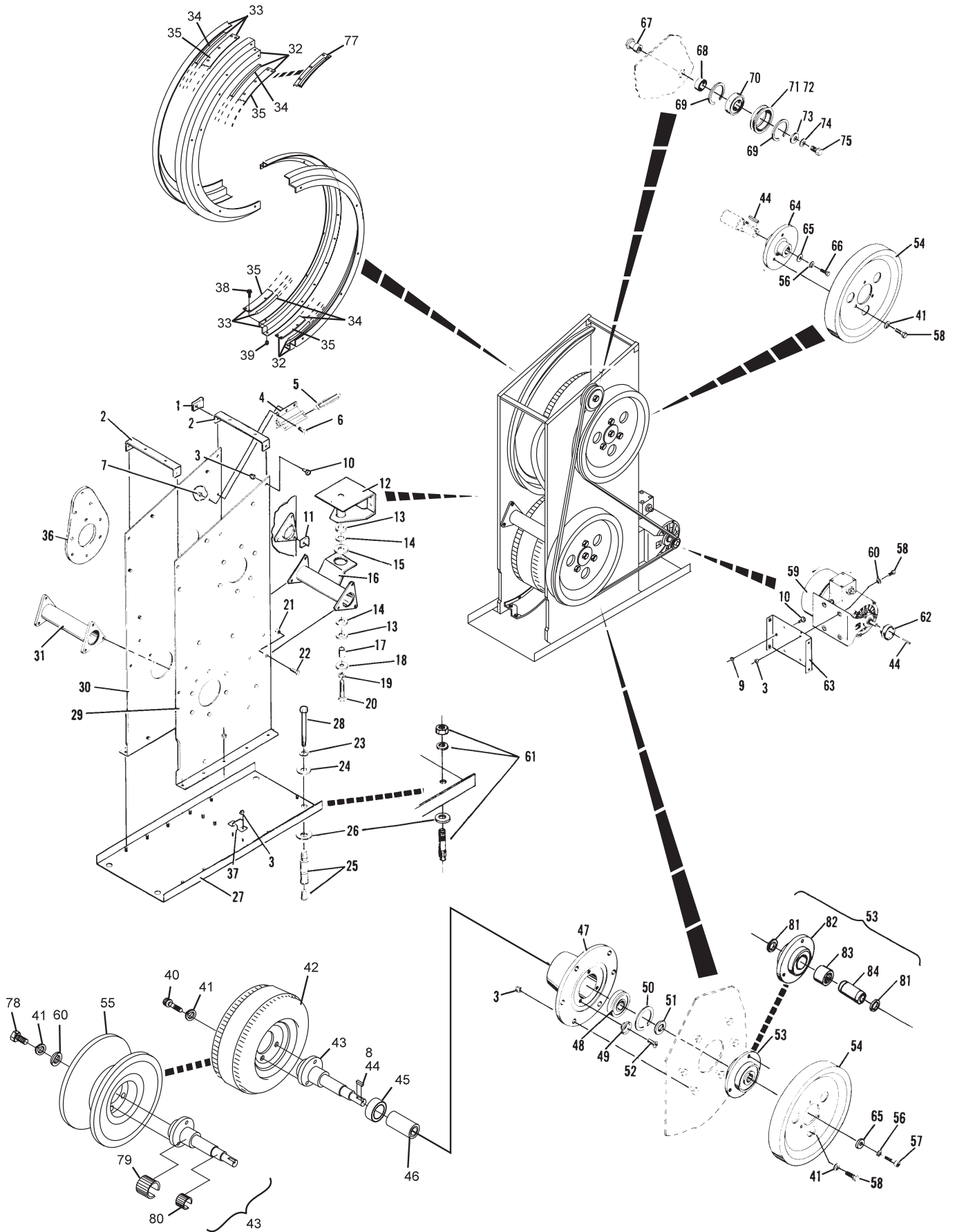
Index			Index		
No.	Part No.	Description	No.	Part No.	Description
1.	N.A.	Wire Clip (5/8)	39.	11-155101-000	Spline Nut (10-32)
2.	53-520243-000	Spacer	40.	11-001258-001	Hex Hd. Cap Screw (5/16-18 x 1/2")
3.	11-170009-001	Self Locking Nut (5/16-18)	41.	11-195015-001	Lockwasher (5/16)
4.	N.A.	Transition Extrusion	42.	53-520060-000	Tire and Rim Assembly
5.	53-520075-000	Rubber and Plate Assy.	43.	53-520066-000	Shaft Assembly
6.	11-001180-001	Hex Hd. Cap Screw (1/4-20 x 5/8")	44.	10-620057-000	Square Key (3/16 x 3/16 x 1-1/4")
7.	11-170007-001	Self Locking Nut (1/4-20)	45.	11-430013-000	Bearing
8.	10-621058-000	Square Key (3/16 x 3/16 x 1-5/16")	46.	53-520067-000	Spacer
9.	11-125202-001	Hex Jam Nut (5/16-18)	47.	53-520068-000	Housing
10.	11-001262-001	Hex Hd. Cap Screw (5/16 -18 x 3/4")	48.	11-430042-000	Bearing
11.	11-605023-000	Wire Clip (7/16)	49.	53-520069-000	Retaining Washer
12.	53-520085-000	Coupling Assembly	50.	15-651243-000	Retaining Ring
13.	53-520092-000	Rubber Washer	51.	53-520088-000	Spacer
14.	11-422021-000	Thrust Bearing	52.	11-008148-001	Hex Socket Hd. Cap Screw w/Nylok (1/4-20 x 3/4")
15.	53-520091-000	Rubber Sleeve (1-3/8" Dia. x 1/4" Thick)	53.	53-860555-000	Clutch Assembly
	N.A.	Rubber Sleeve (1-3/8" Dia. x 3/4" Thick)	54.	53-520063-000	Pulley
16.	N.A.	Support Brace	55.	90-520060-000	Urethane Ball Wheel
17.	53-520090-000	Coupling Bushing (13/16" Dia. x 15/16" Long)		11-002005-001	Hex Socket Hd. Cap Screw (1/4-20 x 1")
	24-200756-000	Coupling Bushing (13/16" Dia. x 1-1/2" Long)	58.	11-001263-001	Heat Treated Hex Hd. Cap Screw (1/4-20 x 1-1/4")
18.	53-520089-000	Washer	59.	53-860322-010	Hex Hd. Cap Screw (5/16-18 x 7/8")
19.	11-195020-001	Lockwasher (5/8)		53-860322-000	Motor (1/4 H.P. 115/230 Volt 50/60 Hz) - See Note
20.	11-001674-001	Hex Hd. Cap Screw (5/8-11 x 2-1/2")			Motor (1/4 H.P. 115/230 Volt 50/60 Hz) - See Note
	N.A.	Hex Hd. Cap Screw (5/8-11 x 3")	60.	11-191012-001	Plain Washer (5/16)
21.	11-170011-001	Self Locking Nut (3/8-16)	61.	11-111459-000	Stud Fastener (1/2-13)
22.	11-001344-001	Hex Hd. Cap Screw (3/8-16 x 1")	62.	53-520027-000	Motor Sheave (2.25 O.D.)
23.	11-195018-001	Lockwasher (1/2)	63.	53-520049-000	Motor Support
24.	N.A.	Plain Washer		53-860468-000	Motor Support Conversion Kit (See Note)
25.	11-111554-000	Concrete Fastener (1/2-13)	64.	53-520064-000	Hub
26.	53-520078-002	Shim (18 Ga.)	65.	11-190530-001	Plain Washer
	53-520078-003	Shim (12 Ga.)	66.	11-002004-001	Heat Treated Hex Hd. Cap Screw (1/4-20 x 1")
27.	53-520032-000	Base Plate Assembly	67.	53-520071-000	Bearing Stud
28.	11-001512-000	Hex Hd. Cap Screw (1/2-13 x 2")	68.	53-520072-000	Spacer
29.	N.A.	L.H. Side Plate Assembly	69.	11-530531-000	Retaining Ring
30.	N.A.	R.H. Side Plate Assembly	70.	11-430028-000	Bearing
31.	N.A.	Brace	71.	53-520025-000	Idler Sheave Only
32.	53-520146-002	R.H. Track Assembly - Complete	72.	53-520026-000	Idler Assembly
33.	53-520146-003	L.H. Track Assembly - Complete	73.	11-190514-001	Plain Washer
34.	53-520171-000	Rubber Track	74.	11-195016-001	Lockwasher (3/8)
	N.A.	Cement (Quart)	75.	11-001342-001	Hex Hd. Cap Screw (3/8-16 x 3/4")
	*11-676047-000	Cement (Gallon)	76.	10-635317-000	V-Belt
35.	53-520172-000	Leather Track	77.	90-520171-000	Urethane Ball Track Assembly (One Piece)
36.	53-520058-000	Doubler	78.	11-001268-001	Hex. Hd. Cap Screw (5/16-18 x 1-1/2")
37.	53-520094-000	Bracket	79.	11-505104-000	Tolerance Ring
38.	11-019654-001	Sems Hex Hd. Machine Screw (10-32 x 1/2")	80.	N.A.	Tolerance Ring
			81.	11-533019-000	Retaining Ring
			82.	53-520422-000	Outer Hub
			83.	11-500552-000	Clutch and Bearing
			84.	53-520421-000	Inner Ring

N.A. = No Longer Available

* Use Index No. 34 cement to bond 53-520171-000 rubber track to metal track.

NOTE: If your ball lift is equipped with a 1140 RPM motor, order 53-860322-010.
If your ball lift is equipped with a 1725 RPM motor, order 53-860322000
Also, if your ball lift was originally supplied with a flat belt drive, order in addition to the motor, one each 53-860468-000 Motor Mount Conversion Kit. The new style motor will not fit on the old mounting plate.

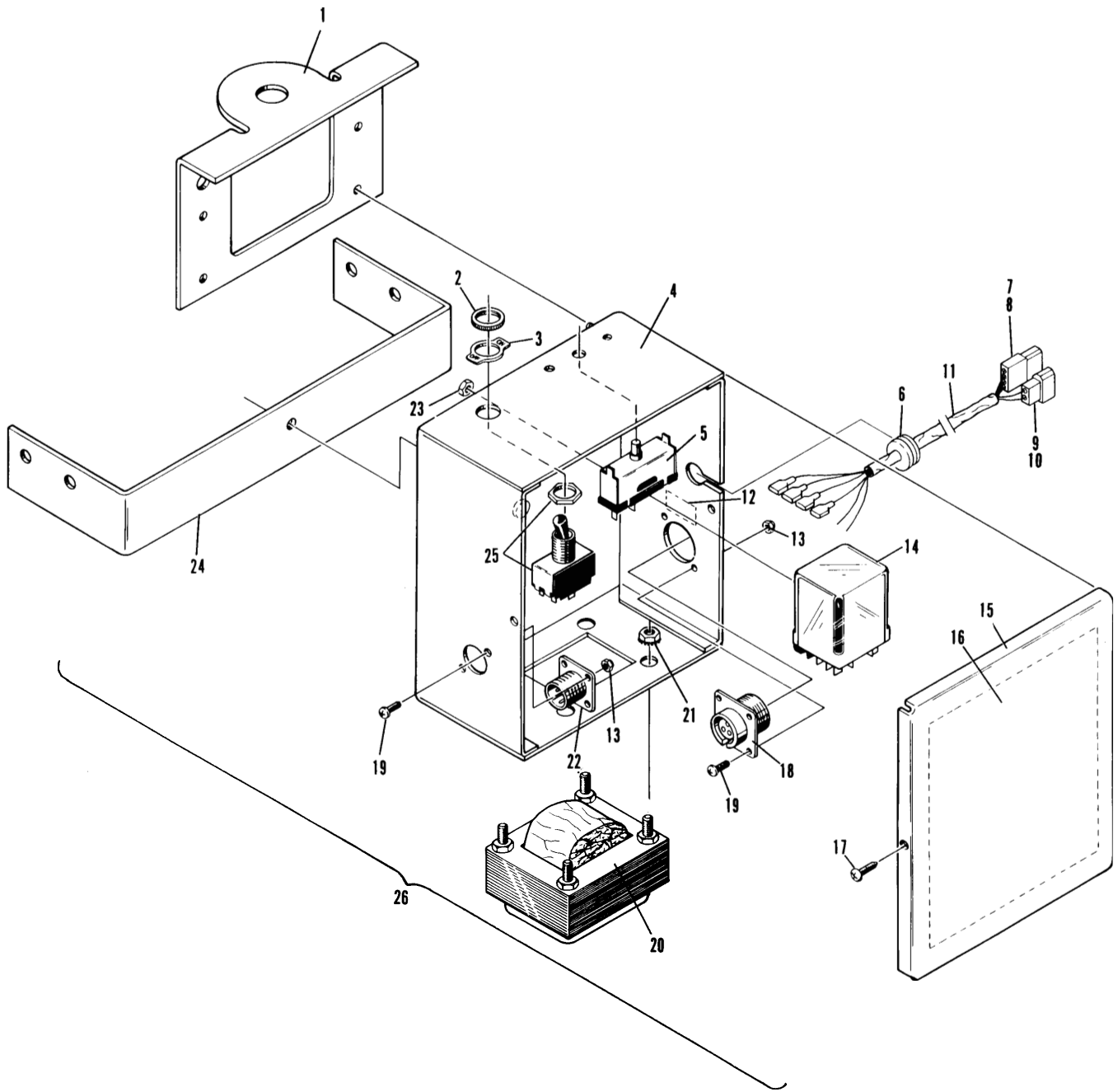
Subway Power Lift Assembly - "V" Belt



Subway Power Lift Assembly - "V" Belt

Index No.	Part No.	Description
1.	53-520205-000	Mounting Bracket
2.	11-125360-001	Electrical Face Nut
3.	11-616602-000	Indicating Plate
4.	N.A.	Box Only
5.	11-685201-000	Circuit Breaker
6.	11-611015-000	Strain Relief
7.	11-680116-000	Connector (2 Contacts)
8.	11-680302-000	Terminal
9.	11-680217-000	Connector
10.	11-680301-000	Terminal
11.	N.A.	Control Box Cable Assembly
12.	N.A.	"Line" Decal
13.	11-170000-001	Self Locking Nut (#4-40)
14.	11-697103-000	Relay (24V)
15.	53-520598-000	Box Cover
16.	N.A.	Circuit Label
17.	11-082232-001	Truss Hd. Self Tapping Screw (#6 x 1/2")
18.	11-678905-000	Receptacle (3 Contacts)
19.	11-012253-000	C.R. Pan Hd. Machine Screw (#4-40 x 5/16")
20.	53-100322-000	Transformer Assembly
21.	11-176007-001	Keps Nut (#8-32)
22.	11-678903-000	Receptacle (3 Contacts)
23.	11-176005-001	Self Locking Nut - Thin (#6-32)
24.	N.A.	Standoff Bracket
25.	11-615502-000	Switch
26.	53-520600-091	Box Assembly - Complete (115V)
	N.A.	Box Assembly - Complete (230V)
	53-520600-093	Box Assembly - Complete (208V)

**Ball Lift Control Box Assembly
For Pan Style Rack**

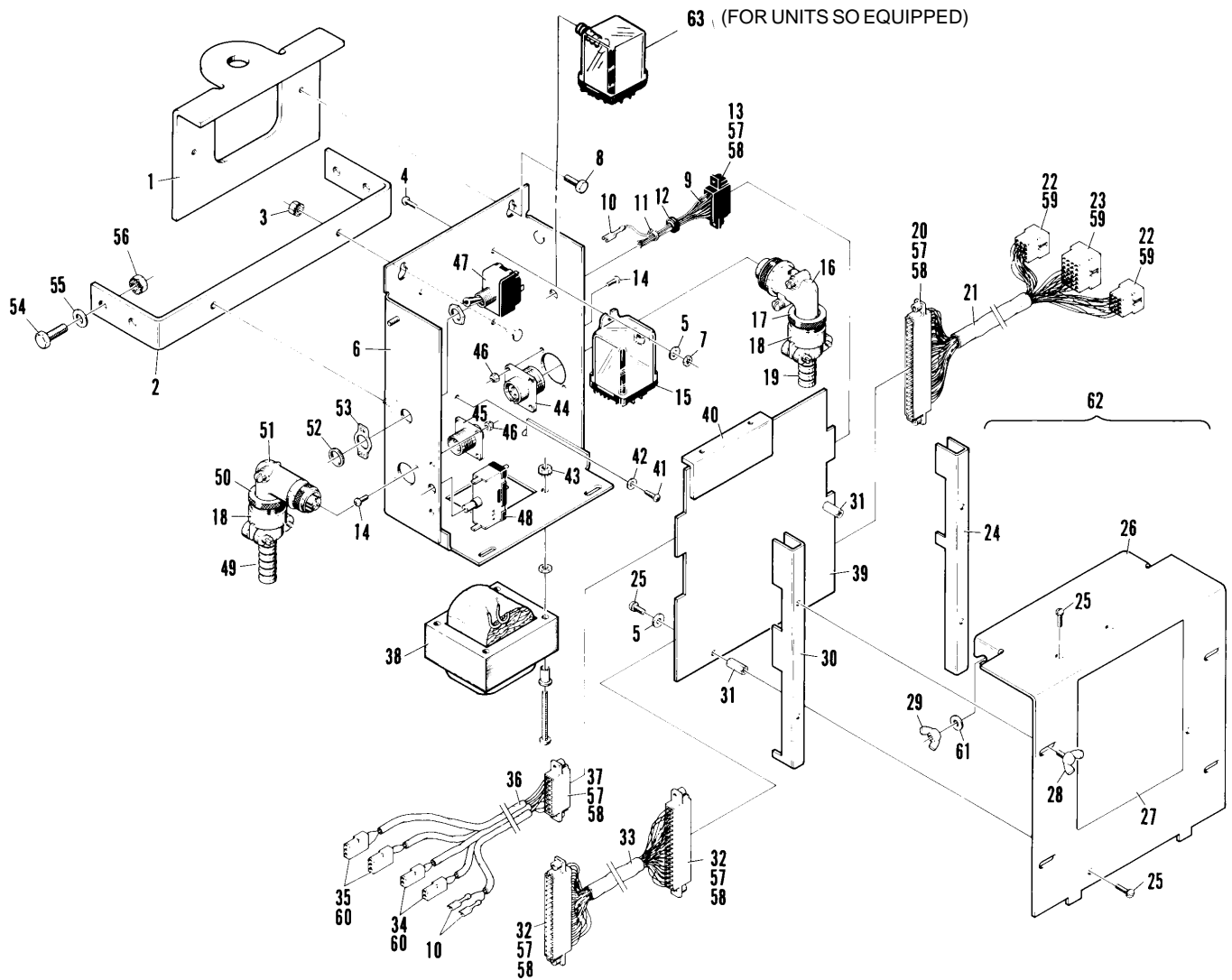


**Ball Lift Control Box Assembly
For Pan Style Rack**

Index No.	Part No.	Description	Index No.	Part No.	Description
1.	53-520205-000	Mounting Bracket	33.	N.A.	Pinfall Display Cable Assembly
2.	53-520241-000	Standoff Bracket	34.	11-680216-000	Receptacle (2 Contacts)
3.	11-170004-001	Self Locking Nut (8-32)	35.	11-680201-000	Receptacle (3 Contacts)
4.	11-013021-001	Slt'd. Pan Hd. Machine Screw (6-32 x 5/16")	36.	N.A.	Ball Rack Cable Assy.
5.	11-190002-001	Plain Washer (#6)	37.	11-696803-000	Edge Connector (8 Contacts)
6.	53-520500-091	Control Box Assembly less Cover (115 Volt)	38.	53-100436-000	Transformer Assembly (110 VAC to 24 VAC)
	N.A.	Control Box Assembly less Cover (230 Volt)	39.	53-860711-000	PCB Assembly- Non-Latching Deck Switch
	N.A.	Box Only		N.A.	PCB Assembly Latching Deck Switch
7.	N.A.	Self Locking Nut - Thin (6-32)	40.	53-520504-000	Aluminum Angle
8.	N.A.	Hex Hd. Cap Screw (10-24 x 3/8")	41.	N.A.	Self Tapping C.R. Rd. Hd. Screw (#6 x 3/8")
9.	53-520525-000	Harness Assembly - Complete	42.	11-198001-001	External Tooth Lockwasher (#6)
10.	11-612252-000	Receptacle	43.	11-176007-001	Keps Nut (8-32)
11.	11-603108-000	Cable Tie	44.	11-678905-000	Receptacle (3 Contacts)
12.	11-651006-000	Grommet (3/8)	45.	11-678903-000	Receptacle (3 Contacts)
13.	11-696802-000	Edge Connector (6 Contacts)	46.	11-170000-001	Self Locking Nut (4-40)
14.	11-012253-001	C.R. Pan Hd. Machine Screw (4-40 x 5/16")	47.	11-615502-000	Toggle Switch
15.	11-697101-000	Relay (24 Volt)	48.	11-685201-000	Circuit Breaker
16.	11-678906-000	90° Angle Plug	49.	53-600149-000	Power Cable Assembly
17.	N.A.	Cable Clamp Adapter	50.	32-201654-000	Cable Clamp Adapter
18.	11-605128-000	Cable Clamp	51.	11-678904-000	90° Angle Plug
19.	53-520212-000	Motor Cable Assembly	52.	11-125360-001	Face Nut
20.	11-696813-000	Edge Connector (22 Contacts)	53.	11-616602-000	Indicating Plate (Off-On)
21.	N.A.	Lane Cable Assembly	54.	11-001183-001	Hex Hd. Cap Screw (1/4 -20 x 7/8")
22.	11-680108-000	Connector Plug (12 Contacts)	55.	11-191010-001	Plain Washer
23.	11-680112-000	Connector Plug (24 Contacts)	56.	11-170007-001	Self Locking Nut (1/4-20)
24.	53-520503-002	R.H. Clamp	57.	11-696926-000	Terminal
25.	11-017522-001	Sems Slt'd. Rd. Hd. Machine Screw (6-32 x 3/8")	58.	11-680425-000	Connector Key
26.	53-520502-000	Cover Only	59.	11-680302-000	Terminal
27.	N.A.	Schematic Decal	60.	11-680301-000	Terminal
28.	11-045053-001	Thumb Screw (8-32)	61.	11-190004-001	Plain Washer (#8)
29.	11-149028-001	Wing Nut (8-32)	62.	N.A.	Control Box Cover Assy. (Latching Deck Switch)
30.	53-520503-003	L.H. Clamp		N.A.	Control Box Cover Assy. (Non-Latching Deck Switch)
31.	11-185304-000	Hex Threaded Spacer (6-32 x 5/8")	63.	11-697103-000	Relay (24V) for units so equipped
32.	11-696811-000	Edge Connector (18 Contacts)			

N.A. = No Longer Available

"2000" Ball Lift Control Box



"2000" Ball Lift Control Box

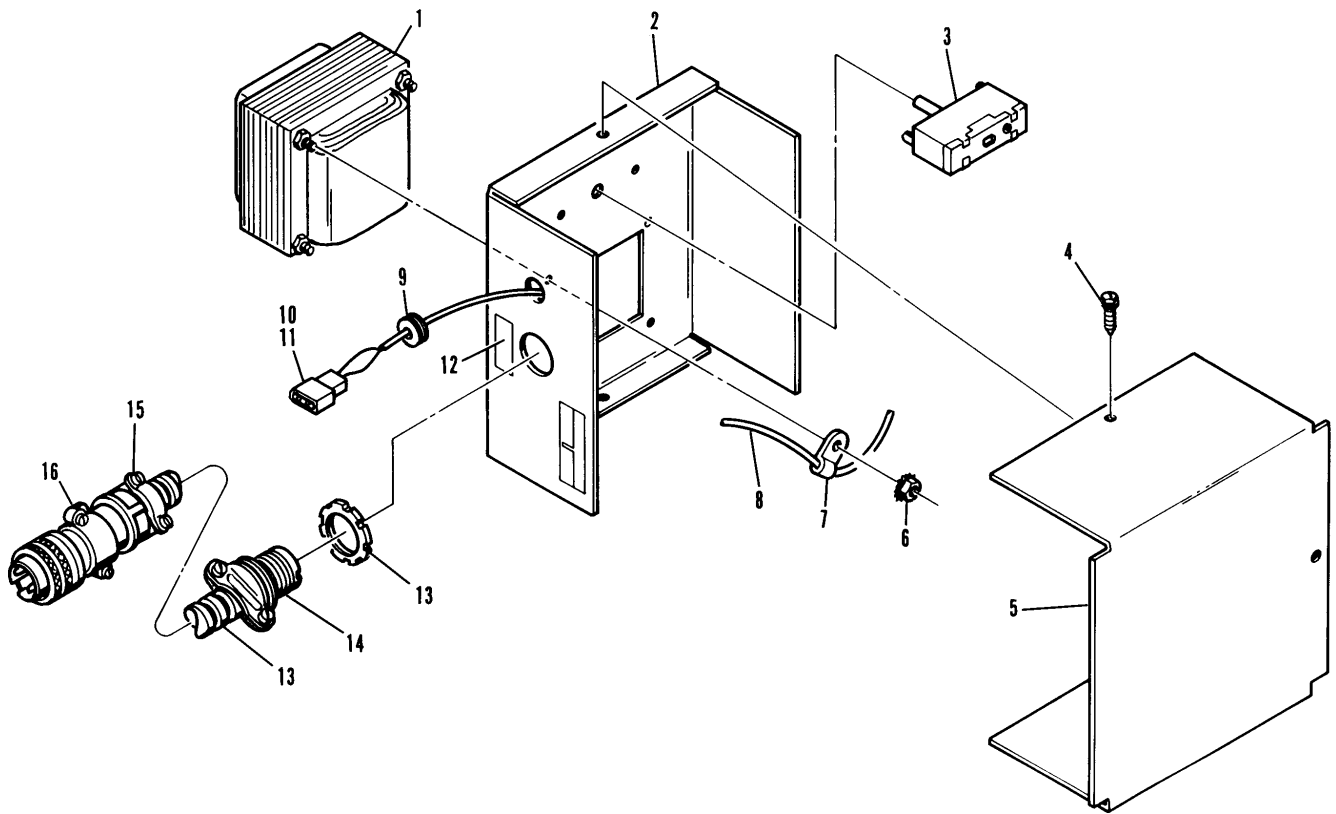
Index No.	Part No.	Description
1.	53-100322-000	Transformer
2.	N.A.	Fan Conversion Cover
3.	11-685201-000	Circuit Breaker
4.	N.A.	Hex Washer Hd. Tapping Screw (#8 x 3/8")
5.	N.A.	Fan Conversion Box
6.	11-176007-001	Keys Nut (#8-32)
7.	11-604001-000	Cable Clamp
8.	53-520592-000	Fan Cable Assembly
9.	11-651009-000	Grommet
10.	11-680302-000	Molex Terminal
11.	11-680116-000	Molex Receptacle
12.	N.A.	"Line" Decal
13.	N.A.	Cable Assembly
14.	11-602104-000	Box Connector
15.	11-605128-000	Cable Clamp
16.	11-678901-000	Connector Plug
17.	53-860687-000	Fan Conversion Box Assembly - Complete

N.A. = No Longer Available

*NOTE: To convert 115VAC to 24VAC order part number 53-860331-000
Signal adapter Kit.*

Fan Conversion Box Assembly

17

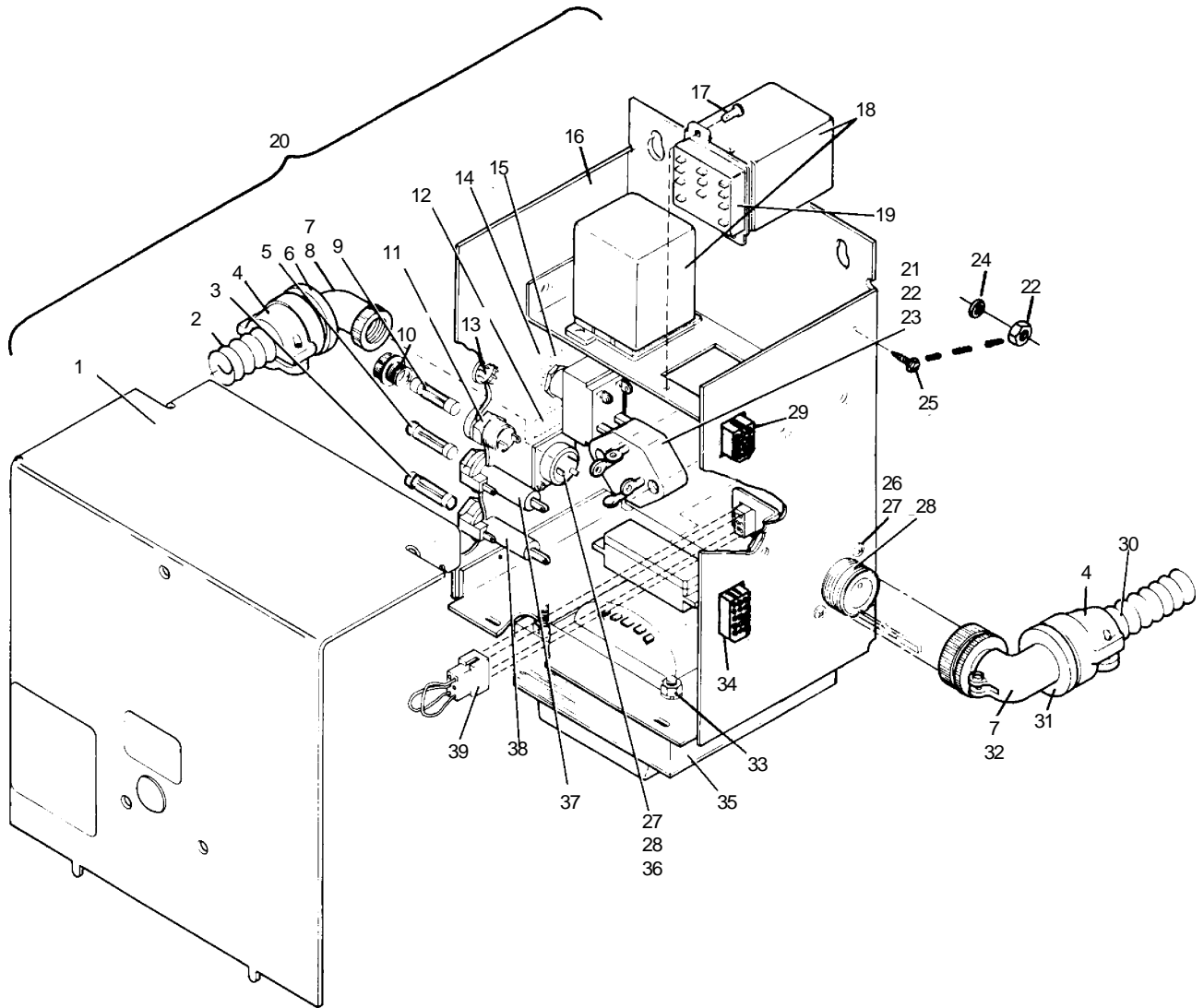


Fan Conversion Box Assembly

Index No.	Part No.	Description
1.	N.A.	Cover
2.	53-600149-000	Wire Harness
3.	N.A.	Fuse (3.2 Amp)
4.	11-605128-000	Cable Clamp
5.	11-685013-000	Fuse (5 Amp)
6.	32-201654-000	Cable Clamp Adapter
7.	N.A.	Insulating Sleeve
8.	11-678904-000	90° Connector Plug
9.	11-685021-000	Fuse (2 Amp)
10.	N.A.	Fuse Cap Only
11.	53-600056-000	Fuseholder Assembly
12.	N.A.	Decal
13.	N.A.	Plug Button
14.	11-615502-000	Toggle Switch
15.	11-616602-000	Indicating Plate (On-Off)
16.	N.A.	Control Box Only
17.	N.A.	Self-Tapping C.R. Rd. Hd. Screw (#6 x 3/8")
18.	11-672600-000	Relay
19.	N.A.	Relay Socket (1/8" Wide Contact)
	N.A.	Relay Socket (3/16" Wide Contact)
20.	N.A.	Control Box Assembly - Complete
21.	N.A.	C.R. Rd. Hd. Machine Screw (4-40 x 5/8")
22.	11-170004-001	Self-Locking Nut (#8-32)
23.	N.A.	Bridge Rectifier
24.	11-190004-001	Plain Washer (#8)
25.	11-018003-001	C.R. Rd. Hd. Machine Screw (4-40 x 5/16")
26.	11-012253-001	C.R. Pan Hd. Machine Screw (4-40 x 5/16")
27.	11-170000-001	Self Locking Nut (4-40)
28.	11-678905-000	Receptacle (3 Contacts)
29.	11-680108-000	Connector Plug (12 Contacts)
30.	53-520212-000	Cable Assembly
31.	N.A.	Cable Clamp Adapter
32.	11-678906-000	90° Angle Plug
33.	11-176007-001	Keps Nut (8-32)
34.	N.A.	Connector Plug (15 Contacts)
35.	N.A.	Transformer
36.	11-678903-000	Receptacle (3 Contacts)
37.	N.A.	Fuseholder (3.6 to 5 Amps)
38.	N.A.	Fuseholder (2.5 to 3.5 Amps)
39.	53-600119-002	Plug Assembly (110 VAC, 50/60 Hz)
	N.A.	Plug Assembly (115 VAC, 50/60 Hz)
	53-600119-004	Plug Assembly (200 VAC, 50/60 Hz)
	53-600119-005	Plug Assembly (250 VAC, 50/60 Hz)

N.A. = No Longer Available

Power Lift Control Box AMF Adapter

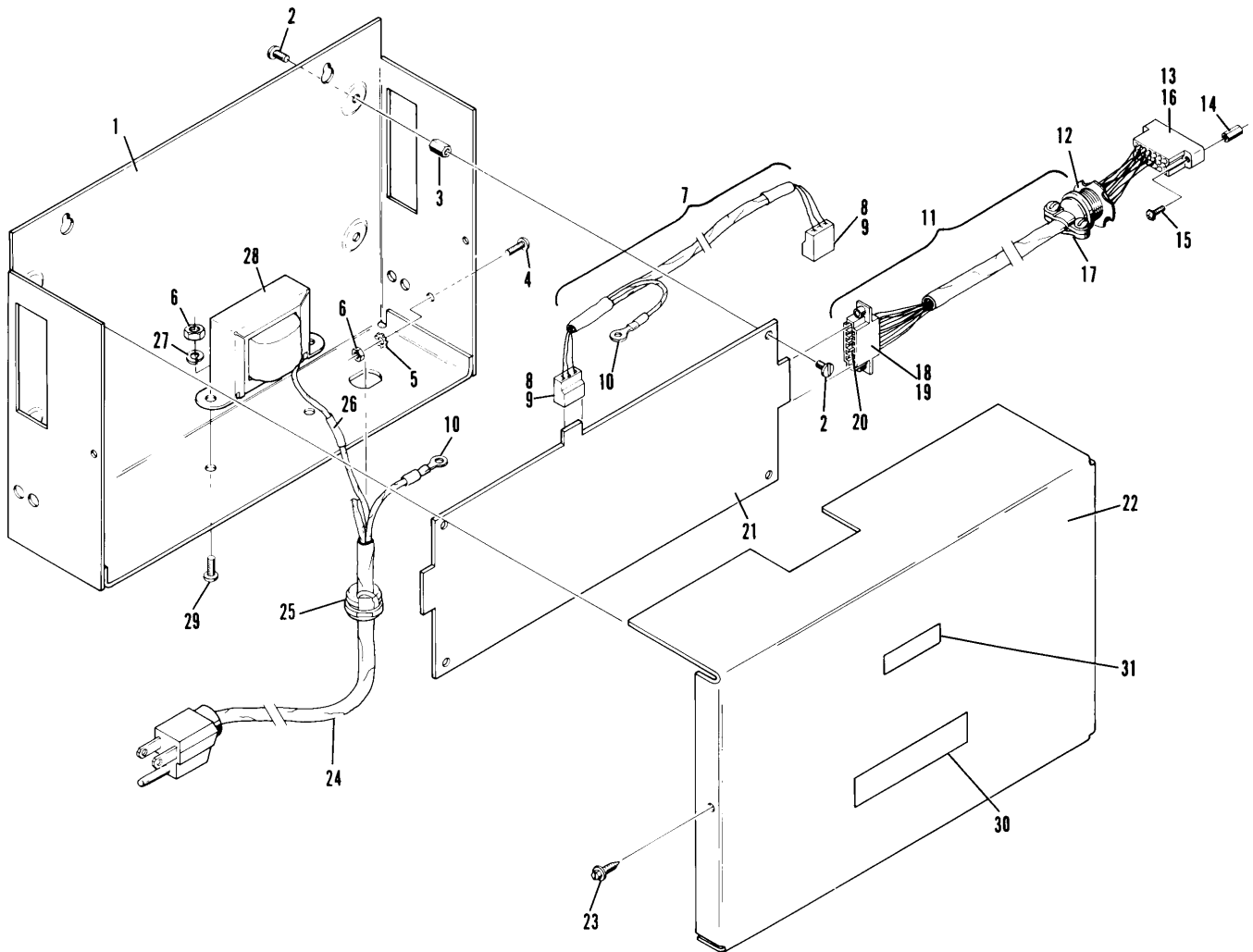
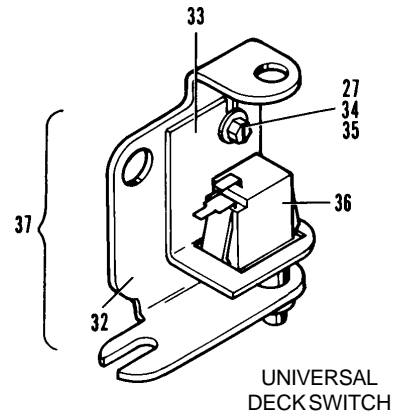


**Power Lift Control Box
AMF Adapter**

Index No.	Part No.	Description
1.	N.A.	Box Only
2.	11-013056-001	Slt'd. Pan Hd. Machine Screw (8-32 x 1/4")
3.	N.A.	Standoff
4.	N.A.	Slt'd. Rd. Hd. Machine Screw (8-32 x 5/8")
5.	11-198002-001	External Tooth Lockwasher (#8)
6.	11-125003-001	Hex Nut (8-32)
7.	N.A.	Pinfinder Display to Pin Display Acquisition Cable Assembly
8.	11-697262-000	Edge Connector (3 Circuits)
9.	11-697288-000	Contact
10.	N.A.	Connector
11.	53-520609-000	Deck Switch Cable Assembly
12.	11-602002-001	Electrical Locknut (1/2)
13.	11-678701-000	Connector (20 Contacts)
14.	N.A.	Guide Pin
15.	N.A.	Sems C.R. Rd. Hd. Machine Screw (4-40 x 5/16")
16.	N.A.	Contact
17.	11-602101-000	Cord Grip
18.	11-696802-000	Edge Connector (6 contacts)
19.	11-696926-000	Terminal
20.	11-680425-000	Connector Key
21.	53-860712-000	Pin Display Acquisition PCB Assembly
22.	53-520612-000	Cover
23.	N.A.	Self Tapping Hex Hd. Washer Screw (#8 x 3/8")
24.	N.A.	Power Cord Assembly
25.	11-611016-000	Strain Relief Bushing
26.	11-612451-000	Splice
27.	11-195008-001	Lockwasher (#8)
28.	53-520610-000	Transformer Assembly
29.	11-107064-001	Slt'd. Rd. Hd. Machine Screw (8-32 x 3/8")
30.	N.A.	F.C.C. Class A Label
31.	N.A.	Decal - "Do Not Remove"
32.	N.A.	Mounting Bracket Assembly
33.	N.A.	Switch Bracket
34.	11-010060-001	Slt'd. Rd. Hd. Machine Screw (8-32 x 1/2")
35.	11-190004-001	Plain Washer (#8)
36.	11-674992-000	Switch
37.	N.A.	Deck Switch Assembly - Complete

N.A. = No Longer Available

"2000" Universal Pin Display Acquisition Box & Deck Switch Assemblies



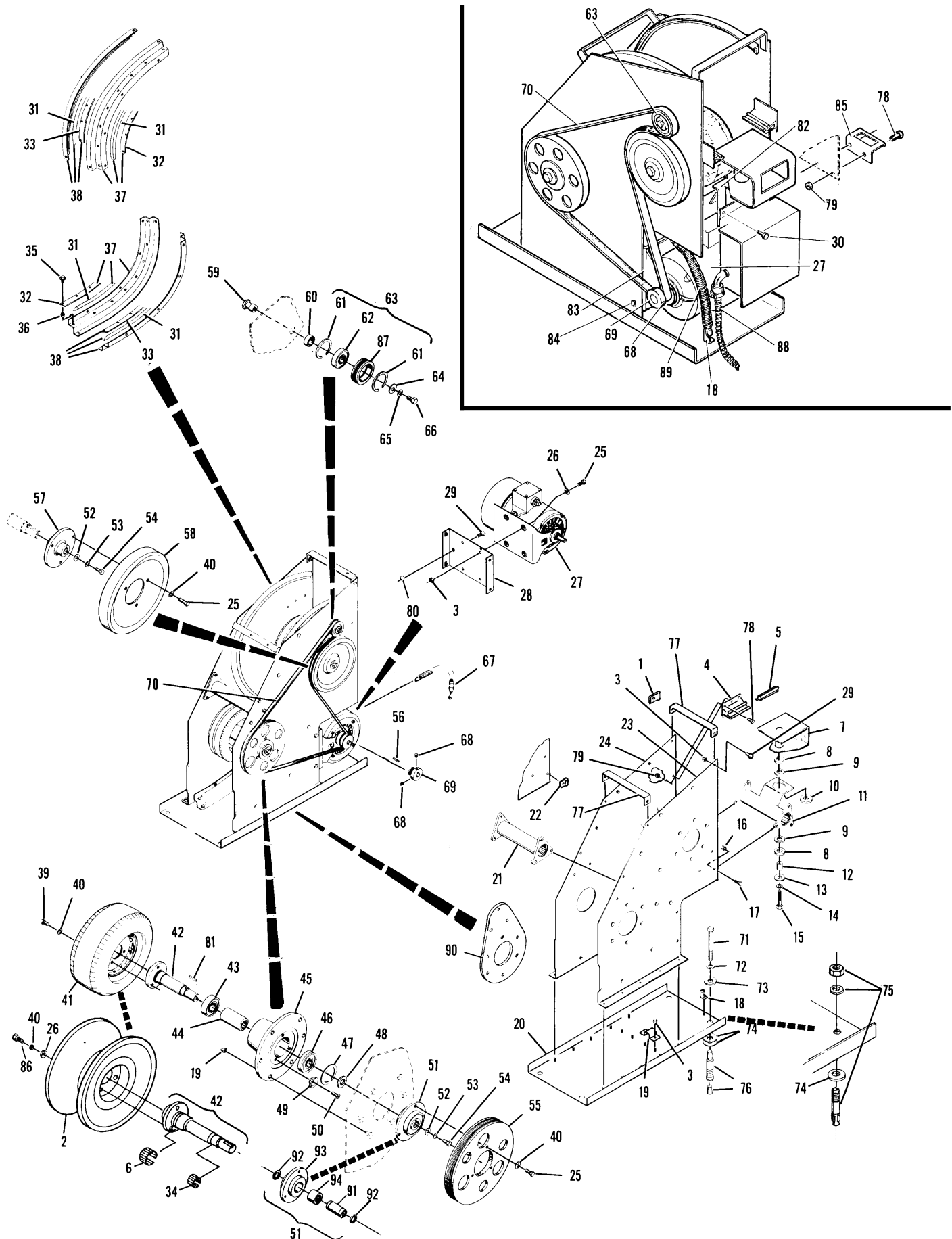
**"2000" Universal Pin Display
Acquisition Box & Deck Switch Assemblies**

Index No.	Part No.	Description	Index No.	Part No.	Description
1.	N.A.	Wire Clip (5/8)	46.	11-430042-000	Bearing
2.	90-520060-000	Urethane Ball Wheel	47.	N.A.	Retaining Ring
3.	11-170009-001	Self Locking Nut (5/16-18)	48.	53-520088-000	Spacer
4.	53-520073-000	Transition Extrusion	49.	53-520069-000	Retaining Washer
5.	53-520075-000	Rubber and Plate Assy.	50.	11-008148-001	Flat Hd. Socket Cap Screw w/Nylok (1/4-20 x 3/4")
6.	N.A.	Tolerance Ring	51.	53-860555-000	Clutch Assembly
7.	53-520085-000	Coupling	52.	11-190530-001	Plain Washer
8.	53-520092-000	Rubber Washer	53.	11-195014-001	Lockwasher (1/4)
9.	11-422021-000	Thrust Bearing	54.	11-002003-001	Heat Treated Hex Hd. Cap Screw (1/4-20 x 7/8")
10.	53-520091-000	Rubber Sleeve (1-38" Dia. x 1/4" Thick)		11-002005-001	Heat Treated Hex Hd. Cap Screw (1/4-20 x 1-1/4")
11.	N.A.	Support Brace	55.	N.A.	Poly V Pulley
12.	53-520090-000	Coupling Bushing (13/16" Dia. x 15/16" Long)	56.	10-620057-000	Square Key (3/16 x 3/16 x 1-1/4")
13.	53-520089-000	Washer	57.	53-520064-000	Hub
14.	11-195020-001	Lockwasher (5/8)	58.	53-520162-000	Flat Pulley
15.	11-001674-001	Hex Hd. Cap Screw (5/8"-11 x 2-1/2")	59.	53-520071-000	Bearing Stud
16.	11-170011-001	Self Locking Nut (3/8-16)	60.	53-520072-000	Spacer
17.	11-001344-001	Hex Hd. Cap Screw (3/8-16 x 1")	61.	11-530531-000	Retaining Ring
18.	53-520231-000	Spring Anchor	62.	11-430028-000	Bearing
19.	53-520094-000	Bracket	63.	53-520244-000	Poly V Idler Pulley Assembly
20.	53-520032-000	Base Plate Assembly	64.	11-190514-001	Plain Washer
21.	N.A.	Brace	65.	11-195016-001	Lockwasher (3/8)
22.	11-605023-000	Wire Clip (7/16)	66.	11-001342-001	Hex Hd. Cap Screw (3/8-16 x 3/4")
23.	N.A.	R.H. Side Plate Assy.	67.	12-100230-000	Tension Spring
24.	N.A.	L.H. Side Plate Assy.	68.	11-101202-001	Set Screw (5/16-18 x 3/8")
25.	11-001263-001	Hex Hd. Cap Screw (5/16-18 x 7/8")	69.	53-520159-000	Motor Sheave
26.	11-191012-001	Plain Washer (5/16)	70.	53-520148-002	Poly V Belt
27.	53-860322-010	Motor (1/4 H.P. 115/230 Volt 50/60 Hz)	71.	11-001512-000	Hex Hd. Cap Screw (1/2-13 x 2")
28.	53-520049-000	Motor Support	72.	11-195018-001	Lockwasher (1/2)
29.	11-001262-001	Hex Hd. Cap Screw (5/16-18 x 3/4")	73.	N.A.	Plain Washer
30.	11-001056-001	Hex Hd. Cap Screw (10-24 x 3/8")	74.	53-520078-002	Shim (18 Ga.)
31.	53-520040-000	Rubber Track		53-520078-003	Shim (12 Ga.)
	N.A.	Cement (Quart)	75.	11-111459-000	Stud Fastener (1/2-13)
	*11-676047-000	Cement (Gallon)	76.	11-111554-000	Concrete Fastener (1/2-13)
32.	53-520042-002	Track Leather - R.H. Bottom and L.H. Top	77.	53-520243-000	Spacer
33.	53-520042-003	Track Leather - L.H. Bottom and R.H. Top	78.	11-001180-001	Hex Hd. Cap Screw (1/4-20 x 5/8")
34.	N.A.	Tolerance Ring	79.	11-170007-001	Self Locking Nut (1/4-20)
35.	11-019654-001	Sems Hex Hd. Machine Screw (10-32 x 1/2")	80.	11-125202-001	Hex Jam Nut (5/16-18)
36.	11-155101-000	Spline Nut (10-32)	81.	10-621058-000	Square Key (3/16 x 3/16 x 1-5/16")
37.	53-520034-000	Track Assembly - Complete (R.H. Bottom and L.H. Top)	82.	53-520205-000	Mounting Bracket
38.	53-520035-000	Track Assembly - Complete (L.H. Bottom and R.H. Top)	83.	53-520228-000	Motor Support
39.	11-001258-001	Hex Hd. Cap Screw (5/16-18 x 1/2")	84.	10-003007-000	Hex Hd. Body Fit Bolt (5/16-18 x 1-1/4")
40.	11-195015-001	Lockwasher (5/16)	85.	N.A.	Mounting Bracket
41.	53-520060-000	Tire and Rim Assembly	86.	11-001268-001	Hex Hd. Cap Screw (5/16-18 x 1-1/2")
42.	53-520066-000	Shaft Assembly	87.	53-520245-000	Poly V Idler Pulley Only
43.	11-430013-000	Bearing	88.	53-600149-000	Wire Harness Assembly
44.	53-520067-000	Spacer	89.	53-520234-000	Tension Spring
45.	53-520068-000	Housing	90.	53-520058-000	Doubler
			91.	53-520421-000	Inner Ring
			92.	11-533019-000	Retaining Ring
			93.	53-520422-000	Outer Hub
			94.	11-500552-000	Clutch and Bearing

N.A. = No Longer Available

* Used to bond Index No. 31 to Index Nos. 37 and 38.

Concealed Surface Power Lift Assembly



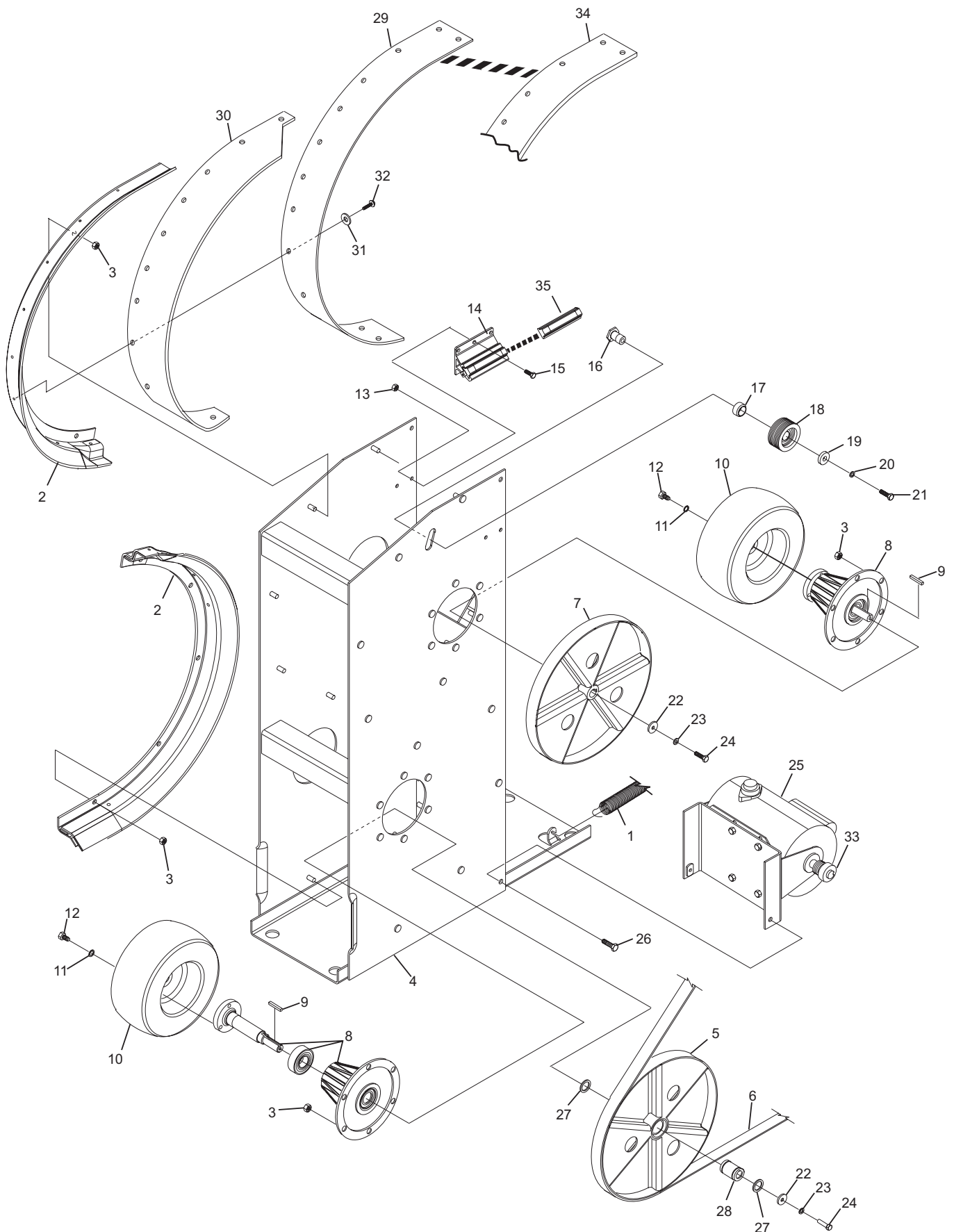
Concealed Surface Power Lift Assembly

Index

No.	Part No.	Description
1.	53-520234-000	Tension Spring
2.	53-520678-000	Ball Lift Track Assembly Right-Hand (upper and lower)
	*53-520679-000	Ball Lift Track Assembly Left-Hand (upper and lower)
3.	11-170009-001	Hex Hd. Nut, Self Locking, (5/16-18)
4.	53-520675-000	Ball Lift Weldment Assembly
5.	53-520663-001	Lower Pulley w/Bearing Assembly
6.	53-520235-000	"V" Belt
7.	53-520658-000	Ball Lift Upper Pulley
8.	53-520685-000	Ball Lift Bearing Housing
9.	10-620057-000	Square Key
10.	53-520060-000	Tire and Rim Assembly
11.	11-195015-001	Lockwasher (5/16")
12.	11-001258-001	Hex Hd. Cap Screw, (5/16-18 x 1/2")
13.	11-170007-001	Hex Nut, Self-Locking, (1/4-20)
14.	53-520073-000	Ball Transition Assembly
15.	11-001180-001	Hex Hd. Cap Screw, (1/4-20 x 5/8")
16.	53-520071-000	Bearing Stud
17.	53-520072-000	Spacer
18.	53-520244-000	Idler Assembly
19.	11-190014-001	Washer, Plain (3/8")
20.	11-195016-001	Lock washer (3/8")
21.	11-001342-001	Hex Head Cap Screw, (3/8-16 x 3/4")
22.	11-190530-001	Washer, Plain, (9/32")
23.	11-195014-001	Lockwasher, (1/4")
24.	11-002004-001	Hex Hd. Cap Screw, (1/4-20 x 1")
25.	**53-860325-000	Motor/Mount Bracket/Power Bracket Assembly
26.	11-002066-001	Hex Hd. Cap Screw, (5/16-18 x 1-1/2")
27.	11-533019-000	Retaining Ring
28.	53-520421-000	Inner Ring
29.	53-520172-000	Leather Track
30.	53-520686-000	Rubber Track
31.	11-190006-001	Washer, Plain (#10)
32.	11-081206-000	Truss Hd. Robertson Screw (10-24 x 5/8")
33.	53-520532-000	Poly V Sheave (1" Dia.)
34.	90-520172-600	Frameworkx Urethane Track - includes one left-hand and one right hand Tracks
35.	90-520075-600	Transition Track Advanced Performance

* Not Illustrated

** When using with B2000 Lift Mounting Plate 53-520671-000.

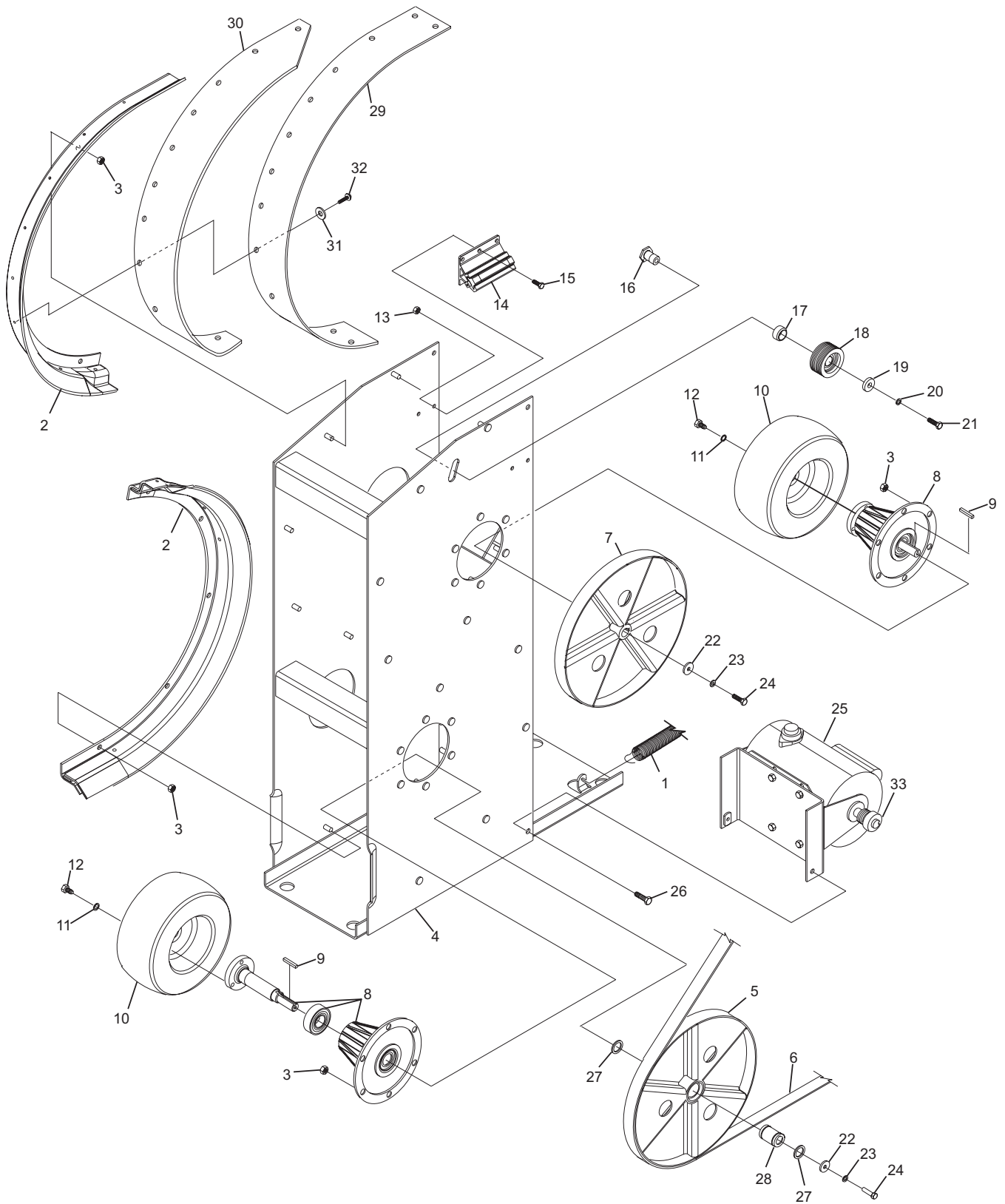


Framworx Ball Lift

Index

No.	Part No.	Description
1.	53-520234-000	Tension Spring
2.	53-520678-002	Ball Lift Track Assembly Right-Hand (upper and lower)
	*53-520679-002	Ball Lift Track Assembly Left-Hand (upper and lower)
3.	11-051744-001	Locknut (M8)
4.	53-520675-001	Ball Lift Weldment Assembly
5.	53-520663-001	Lower Pulley w/Bearing Assembly
6.	53-520230-002	"V" Belt
	53-520235-000	Belt (generic)
7.	53-520658-000	Ball Lift Upper Pulley
8.	53-520685-000	Ball Lift Bearing Housing
9.	10-620057-000	Square Key
10.	53-520060-000	Tire and Rim Assembly
11.	11-051770-001	Lockwasher (M8)
12.	11-051043-001	Hex Hd. Cap Screw, (M8 x 12 mm)
13.	11-051743-001	Hex Nut, Self-Locking, (M6)
14.	53-520073-000	Ball Transition Assembly
15.	11-051035-001	Hex Hd. Cap Screw, (M6 x 16 mm)
16.	53-520071-001	Bearing Stud
17.	53-520072-000	Spacer
18.	53-520244-001	Idler Assembly
19.	11-052018-001	Washer, Plain (10.5 mm x 21 mm x 2 mm)
20.	11-051771-001	Lockwasher (M10)
21.	11-051028-001	Hex Head Cap Screw, (M6 x 25 mm)
22.	11-052067-001	Washer, Plain, (7.4 mm x 22 m x 2 mm)
23.	11-051769-001	Lockwasher, (M6)
24.	11-051028-001	Hex Hd. Cap Screw, (M6 x 25 mm)
25.	53-520704-001	Motor/Mount Bracket/Power Bracket Assembly
26.	11-051053-001	Hex Hd. Cap Screw, (M8 x 40 mm)
27.	11-051856-001	Retaining Ring
28.	53-520421-000	Inner Ring
29.	53-520421-001	Leather Track (right-hand or left-hand)
30.	53-520686-000	Rubber Track (right-hand or left-hand)
31.	11-190006-001	Washer, Plain (#10)
32.	11-081206-000	Truss Hd. Robertson Screw (10-24 x 5/8")
33.	53-520532-000	Poly V Sheave (1" Dia.)

* Not Illustrated

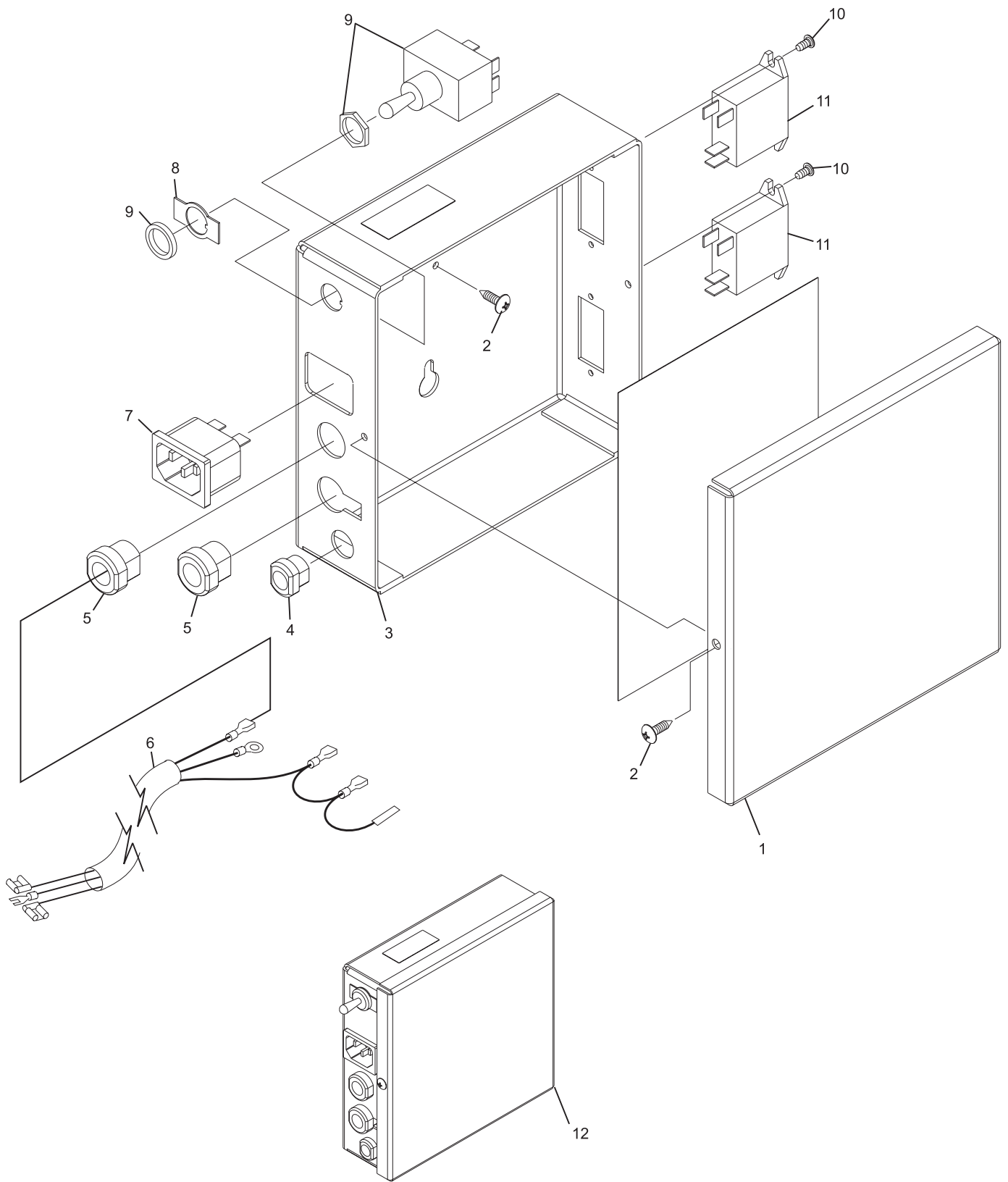


**Framworx Ball Lift
(Metric)**

Index No.	Part No.	Description
1.	53-520693-000	Cover
2.	11-082232-001	Truss Hd., C.R. Screw, (#6 x 1/2")
3.	53-520691-000	Enclosure
4.	11-611015-000	Bushing, Strain Relief
5.	11-611016-000	Bushing, Strain Relief
6.	53-520701-000	Ball Lift Motor Cable Assembly
7.	11-686558-000	Power Receptacle
8.	11-616602-000	Plate-ON/OFF
9.	11-615522-000	Toggle Switch
10.	N.A.	Pan Hd., C.R., Self Tapping Screw, (#4 x .25")
11.	11-672523-000	Relay
12.	53-520692-000	Ball Lift Control Box - Complete

NOTE: For cable from ball lift to pinsetter are order part number 53-860688-000.

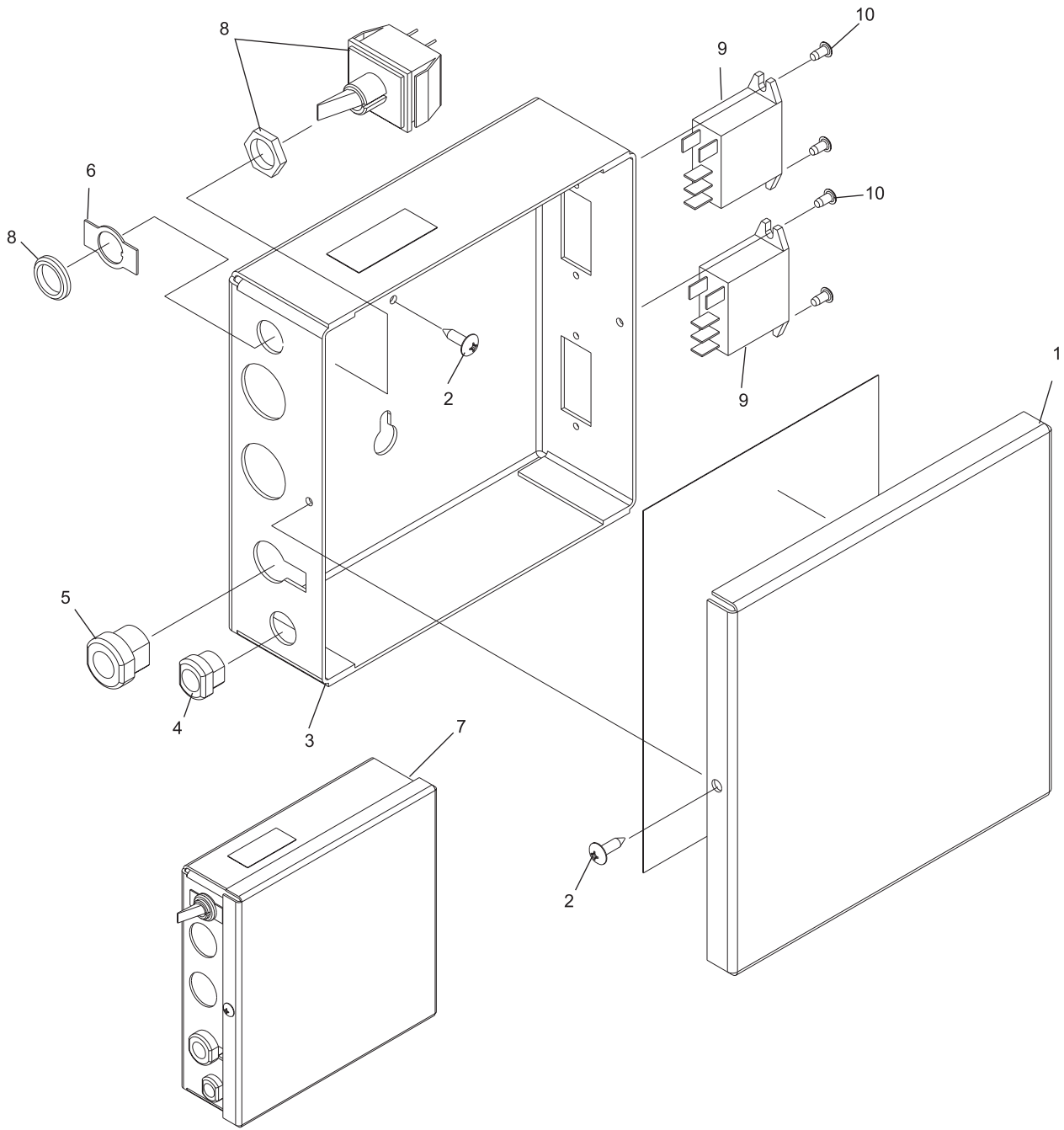
Frameworkx Ball Lift Control Box



Frameworx Ball Lift Control Box

Index No.	Part No.	Description
1.	53-520693-000	Cover
2.	11-082232-001	Pan Hd., C.R. Screw, (M3.5 x 13 mm)
3.	53-520714-000	Enclosure
4.	11-611015-000	Bushing, Strain Relief
5.	11-611016-000	Bushing, Strain Relief
6.	11-616602-000	Plate-ON/OFF
7.	53-520715-000	Ball Lift Control Box - Complete
8.	11-615523-000	Toggle Switch
9.	11-087500-000	Pan Hd., C.R., Self Tapping Screw, (M2.9 x 9.5 mm)
10.	11-672523-000	Relay

Frameworkx Ball Lift Control Box (Metric)



Frameworx Ball Lift Control Box (Metric)